



16

( )

VTB.

"

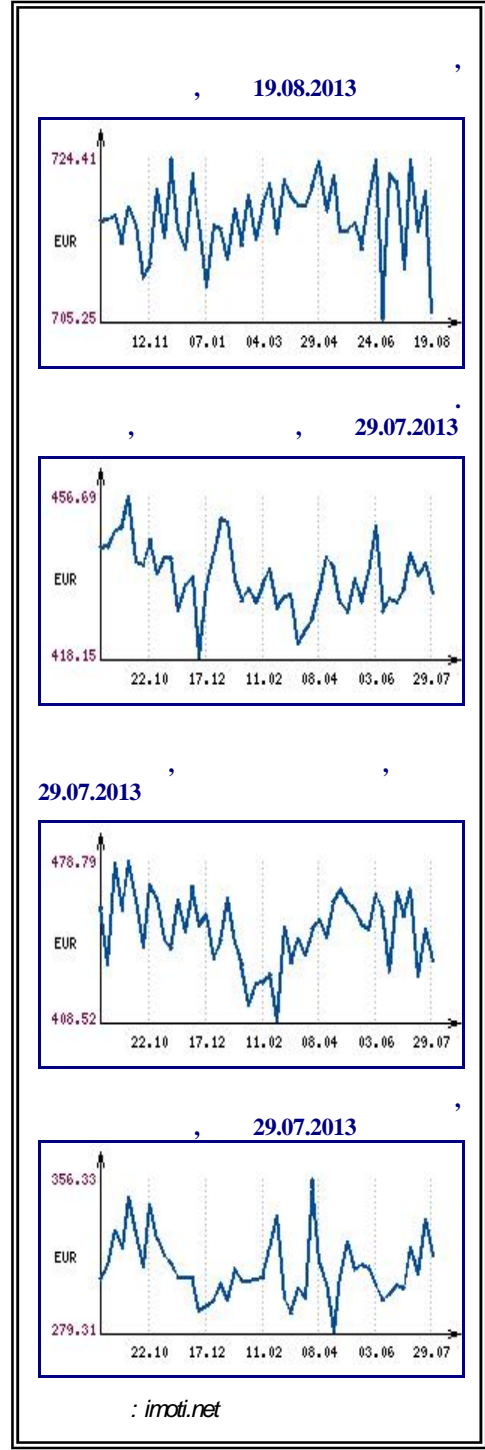
, 21 2013

( )

" (Kingsbury Corporation),

"

" (Sunfoods Holding),



24 , 21 2013 .

"

"

"

"

2013 .

BayernLB

"

"

Achmea

- "

",

- "

".

, 21 2013 .

"

"

170 .

( )

170

Bayern LB. " 2013 .

100

"

",

, 19 2013 .

-

"

"

-

"

"

-

"

10 240 000 .

-

" 5

"

"

71.50

( ) .

75 /

"

2014 .

"

econ.bg, 19 2013 .

1.993 . . . 2.38%

423

2013 . . . 711.1 . . . (1.7%) . . .

1134.3 . . . (2.9%) . . .

423,2 . . .

2013 . . .

( / /

536.8 . . .

110 . . .

2012 . (426.8 . . .)

65.8 . . . , 124

2012 . . . - 2013 . . .

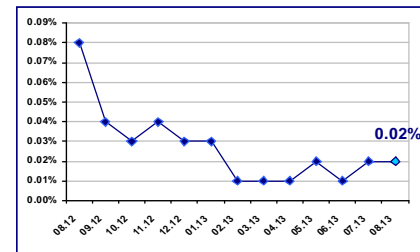
21.08.2013

EUR/BGN	1.95583
USD/BGN	1.46045
GBP/BGN	2.28779

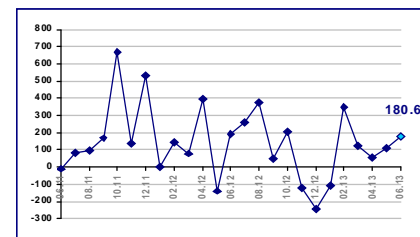
USD/BGN



0.02% 01.08.2013

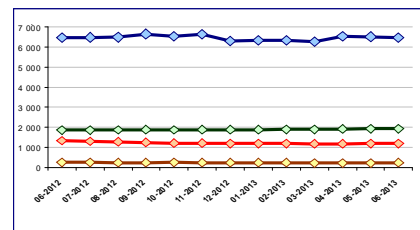


180.6 . EUR 2013

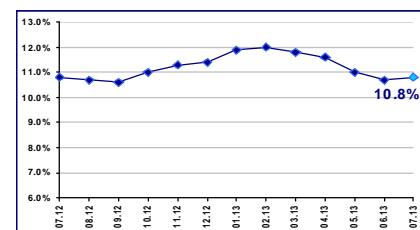


2013

Към нефинансови предприятия    Към домакинства и НПОД  
 Жилищни кредити    Други кредити



10.8% 2013



125.1 . ,  
 656 . ) - 2012 . - 2013 . ( )  
 51.6 . 2012 . - 49.2 .  
 2013 . (336.3 . ), (61.9 . )  
 (61.5 . ).  
 (-20.3 . ).  
*econ.bg, 19 2013*

1,6%,  
 0,5%.  
 1,7%,  
 2,4%.  
 -0,4%.  
 2013 . - (-0,5%), 2,5%.  
 (0,4), - (3,9%), (3,4%) (3,1%), (0%)  
 17 , 9  
 (0,12),  
 (0,09%) (0,08%).  
 018%), (-0,08%) (-0,06%).  
 0,5%. 1,6%  
*econ.bg, 19 2013*

**293.2**

293.2 .  
 2013 . 106.9 . 2012 . - 2013 .  
 889.1 . (2.2% ) - 2012 . 304.1 . (0.7% )  
 ( ) . 2013 . 262.2 .  
 97.9 . 2012 . (331.9 . ) (302.4 . ) -  
 2013 . 231.3 . (0.6% )  
 944.6 . (2.4% ) - 2012 . 2013 .  
 307.5 . 371.4 . 2012 .  
*profit.bg, 19 2013*

9,5%  
 1 059  
 1 168 ,  
 ( 54%).  
 8,6% 2012 . 633  
 - 35,6%.  
 13% 377  
 . , 16 2013

2013 . 0.1% 0.2%  
 , ( ) .  
 4 19.321 . . 16.683 . . , -  
 (61.2%), (32.9%)  
 (5.9%).  
 (81.2%),  
 2013 . 4.225 . . 15.690 . . 21.9%.  
 , 15 2013 .  
 2013 .

10

”  
 ”  
 2011 .

No_ 2011			/ ( . . )	
			2011	2010
1			11 081	10 700
2			7 192	5 367
3			6 369	2 263
4			2 453	2 288
5			1 940	1 952
6			1 767	-361
7	2006		1 693	216
8			1 516	1 618
9			1 018	2 176
10			884	1 026

(BEIS) [www.beis.bia-bg.com](http://www.beis.bia-bg.com)

" " " " - ( ).

Quarzwerte,  
4.156  
95.45%

Quarzwerte

Quarzwerte

, 2013-08-20

50

50

26

, 2013-08-20

(12 -17 2013)

( )

Premium	837 345.93
Standard	1 564 527.53
	403 115.54
	<b>3 531 108.01</b>

**BGREIT: 19.07.2013 – 20.08.2013**

**BG40: 19.07.2013 – 20.08.2013**

**SOFIX: 19.07.2013 – 20.08.2013**



161

295 , 134

, 21 2013

**Standard Profil**

Standard Profil

12

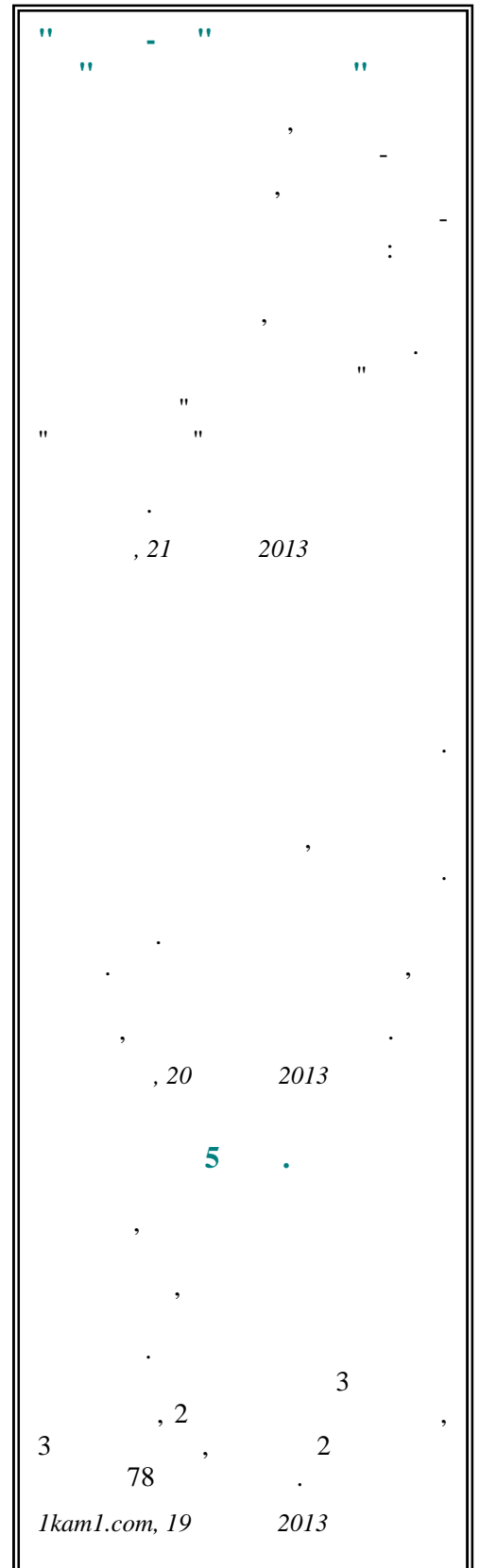
40%

Standard Profil

Motors,  
Daimler Mercedes.  
Dily, 21

2013

General  
Fiat, Volkswagen, Renault,





„

2.4

1.240 „ 1.168 6.2% 2011

,20 2013

3

„

„ 6

1988

2.8

,20 2013

**3**

3

5 206 845 „ 18 625

2008 „

2013 „

,20 2013

2013

„ (Sollers).

40 758 64 15,79%

- 28-30% 2012 . 27,02%

- 23%.

2013 . 1,6%, - 0,4%.

7 10 , - 6 9 .

,19 “ ” ,

2013 ?

2 -

Inter Ferry Boats,

Inter Ferry Boats

Investor.bg, 19 2013

33 000 60 9

10-20

,19 2013

” “ 22,7

75% 20% ”

18,2 -

104 525 ( 1981 ).

” 598

2012 ” ” 3,5 24

13,6

Stroimedia.bg, 16 2013



20

.  
 ,  
 - 100  
 ,  
 -  
 Groupon ( ).  
 ,  
 " " 5 .  
 , ( )  
 ,  
 grabo.bg,  
 , " grabo.bg.  
 - 50, 10 000  
 kolektiva.bg, Rebate Networks,  
 30 " .  
 kolektiva.bg. " - " - , -  
 .  
 2012 . " - " 20 30% .  
 ,  
 vsichkioferti.bg, - " ,  
 - 65 - 70% . " ,  
 ,  
 kolektiva.bg dalavera.bg ( Neogen),

vipoferta.bg  
 vipoferta.bg  
 100%,  
 dalav ra.bg  
 flash sale ( )  
 fashiondays.bg,  
 kolektiva.net  
 (70 30%),  
 10%, 20%, 15 25%  
 Kolektivni.bg.  
 vsichkioferti.bg,  
 , 19 2013



---

: 25.09.2013- 26.09.2013

: , , ." "16-20



**IT**

---

: 23.09.2013

: , , , ." "1



---

: 19.09.2013

: , , , ." "1