

37

37

2013

37,083

290,5

3,303

2012

33,779

52%

9%

39%

689,7

317

6

1,7%

5,7

2012

323,4

01

2013

12,6%

12,6%

12,7%

10,7%

25,5%

25

26,2%

()

23,2%

1

23,4%

23,9%

12,1%

11%

10,9%

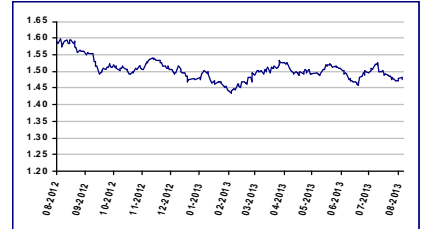
01

2013

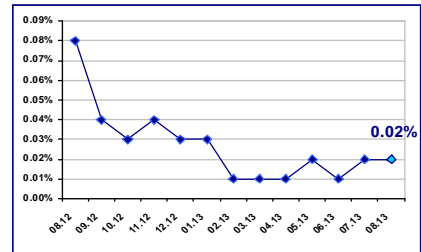
07.07.2013

EUR/BGN	1.95583
USD/BGN	1.47276
GBP/BGN	2.25912

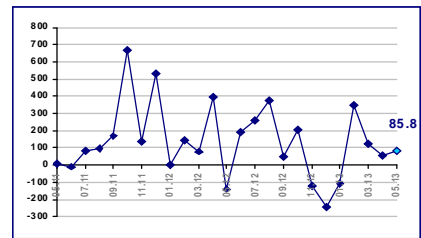
USD/BGN



0.02% 01.08.2013

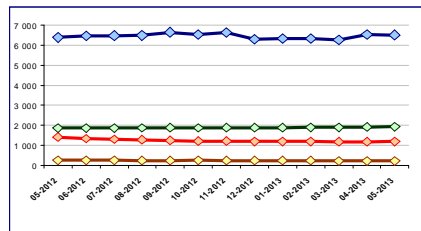


85.8 . EUR 2013

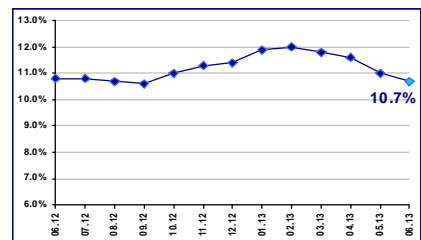


2013

Към нефинансови предприятия Към домакинства и НПОД
Жилищни кредити Други кредити



10.7% 2013



0.1% ,
 2.7%,
 0.9% 2013 . 10.5%,
 , 0.5%.
 , 31 2013
7,6 .
 7,6 . 6 .
 10,9 (46,8%),
 - 2,132 (61,9%).
 14,173 , 44,7%
 1,8 , 41,9% 2013
 , 31 2013
10

" , " 2011 .

No_2011			(. .)	
			2011	2010
1			366 317	284 903
2			148 074	102 017
3			60 694	45 694
4			42 521	45 060
5			41 150	41 054
6			35 526	35 984
7			34 495	26 240
8	2006		34 459	9 588
9			19 489	17 096
10			18 978	13 031

(BEIS) www.beis.bia-bg.com

Mondo

FTSE

FTSE Mondo Visione Exchanges Index.
 FTSE Group Mondo
 Visione, 2000 .
 Index . FTSE Mondo Visione Exchanges

Mondo Visione FTSE Group",
 26
 (London Stock Exchange Group),
 (NYSE Euronext),
 NASDAQ OMX
 Group, Deutsche Boerse
 Exchange S.C. Bursa de Valori Bucuresti S.A.).
 , 2013-08-07

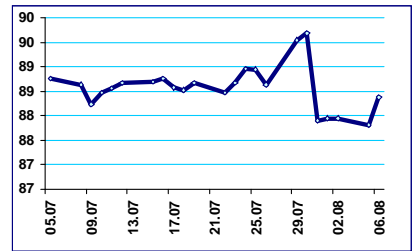
20.09.2013 . 11.00 .,

Money.bg, 2013-08-07

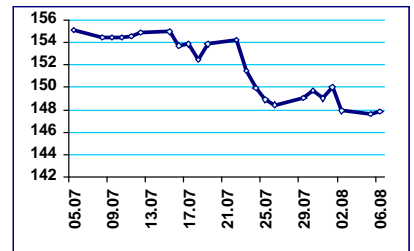
2650
 profit.bg, 2013-08-06

	(29 -3
2013) ()	
Premium	3 341 689.40
Standard	3 092 459.22
	497 636.77
	10 063 126.23

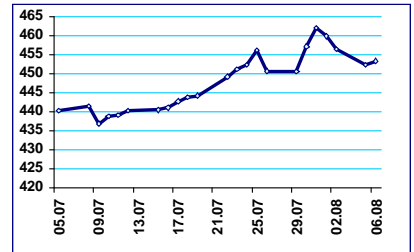
BGREIT: 05.07.2013 – 06.08.2013



BG40: 05.07.2013 – 06.08.2013



SOFIX: 05.07.2013 – 06.08.2013



1,
 300 000 000

0.693 .
 20.94

28 355

6 400

6 . . .
 13.256 . . . 15.71
 . . . 13.256 . . .
 5.4 . . . 2.40 . . .
 . . . 100%, . . . 5.89 . . .
 . . . - 1.227 . . . 50%
 - . . . 19 30 . . . 2013 . . . 11
 . . . 26 . . .
 6 (. . .) 2013 . . .
 profit.bg, 2013-08-06

2013 . . . 498 266 . . . 1 0.733 . . . - . . . 31
 . . . 2013 . . . 300
 . . . 99 308 . . . - . . . (56 178 . . .),
 . . . 22 000 20 780 . . .
 . . . 5000 . . . 0.972 0.98 . . .
 profit.bg, 2013-08-05

3,22%
 150 000 . . . 3,22%
 . . . 29 2013 . . . 4,65 . . . 1
 . . . 500 000 . . . 350 000 . . .
 2013
 . . . 2005-2012 . . .
 . . . - . . . 7-8
 . . . 5-7 . . .
 . . . , 2013-08-05

10.12%
 10.12 . . . X3News.
 1000 . . . 25 31
 276 414 . . . 3.33 . . . 920 . . .
 4.914
 . . . 3.28 3.33 . . .
 profit.bg, 2013-08-02



2500 . . , 8 . .
 30-
 4 . . "
 60
 , 7 2013
 13 . . , 12 . .
 , 7 2013 266 . .
 " " " ,
 9 . . 44.4 . . (22.8 . .) .

500 000 -
 320
 , 7 2013
 680 .
 "680 .
 " ,
 , 7 2013
 " "
 " "
 " "
 Stroimedia.bg, 5 2013

9 , " " .
 , 1997 " " ,
 , 7 , 2013
 , 2500 , 8 .
 , 30- ,
 " " 4 .
 , 60 .
 , 7 2013
 " ()
 10-15 " , " 7-8 .
 , " 10
 " , 1,5
 ,
 , 6 2013

1 151	2013 .	395 038	() ,
32	2 985 /	23 736 .	602 214 .
50.7%,	- 59.0%,	- 43.2%,	
- 53.8%,	- 31.6%.		
	39.4%.		2012 .
- 2.5%,		- 5.6%,	
		6.8%.	

22.0%, 7.8% .
 3.9 15.7%.
 Money.bg, 5 2013

10
 2013

72

2020

71 097 547
 25
 - 3765.40
 24
 6
 21
 7
 2014 – 2020

477 964 837
 ,5 2013

19,5

"

"

19.5
 2010
 59 . 30 , 2.5
 , 25.7 19
 , 8
 " , " ."
 125
 ,5 2013
 569

25.5 . .

” ’ ” ” ”
” ’ ”
” — ”
” ’ ”

25.5 . .

SOL spa (Monza, Italy).
SOL spa (Monza, Italy).

2500 580 55 22
, 2 2013 2012

90%

20%

10%

, 1 2013



:
 , - ,
 ,
 - " ",
 ().
 " - 2". " "
 " " ().
 " "
 3.8 . . ,
 90 . .
 - , 170 . . ,
 " "
 " ,
 78 . 1000 ,
 39 .
 " " 300 . .
 80% (), 184 . ,
 117 . 33 . 2012 . ,
 " - 2".
 " " , (.
 , ,
 ,
 270 . .
 " " .

382

Citibank,

BNP Paribas.

"

-

",

"

"

, 1 2013



: 25.09.2013- 26.09.2013

: , , ." "16-20



IT

: 23.09.2013

: , , , ." "1



: 19.09.2013

: , , , ." "1