

2,5 .

" - " 2,5

,09 2013 " "

900,56 - 681 080,08 471 751,20 241
20%

,08 2013 " "

26% 11 " 51%,
2014 . 76%.
49%.

" " " 1
" " 2500 , 2011 . 75
65 " " 2008

,08 2013

" 2", 1 "AES", " 3"
" " " 30-32 -
2014 .", 2013 .
" " 3
",

,05 2013

1%

1.8% 2014 . 2.9% 2015 .
0.8% 2012 ,

"

2012

2013 . ,

" ,

13% 12.8%
2014 . 12.5% .

0.5 1.4% ,
2012 .

1.3% 2014 ., 1% 2015 . 0.8%
2016 .

, 09 2013

3-

1,32%

() ,
30 2016 .

1,32% .

3,59 ,

40 .

143,65 .

5,93 , - 4,42% .
2,49% , - 2,25 .

, 09 2013

3,3%

9,3%

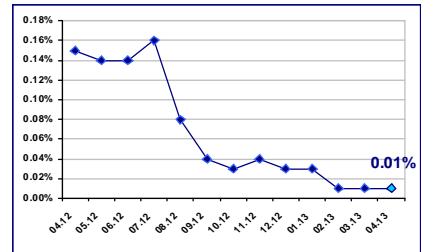
10.04.2013

| | |
|---------|---------|
| EUR/BGN | 1.95583 |
| USD/BGN | 1.49987 |
| GBP/BGN | 2.29625 |

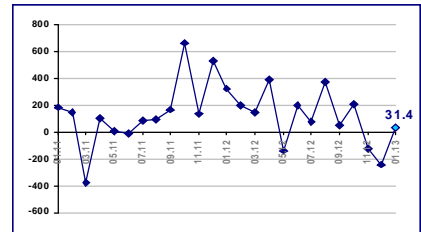
USD/BGN



0.01% 01.04.2013

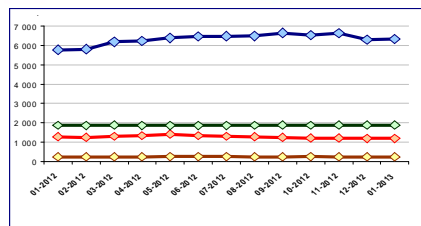


31.4 . EUR 2013

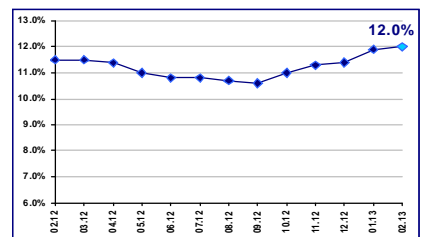


2013

Към нефинансови предприятия Към домакинства и НПО/ОД
Жилищни кредити Други кредити



12.0% 2013



5,4%,
5%.
4,9%.
, 09 2013

2011 .
2011 .
2002 .
675
, 09 2013

17,5%
17,8%.
2011 . 4,96 . 26,9%
-
868

1,5 .,, ”
1,528 . , 783,9 .
2,07%
” ” 721,5 .
- 62,4 . .
, 4,6 .
-
- 9,2 . .
, 08 2013

10

”
”
2011 .

| No_2011 | | | (. .) | |
|---------|-----|--|---------|--------|
| | | | 2011 | 2010 |
| 1 | | | 77 819 | 72 141 |
| 2 | | | 28 536 | n.d. |
| 3 | | | 27 360 | 27 710 |
| 4 | - - | | 21 291 | 21 563 |
| 5 | | | 11 531 | 11 535 |
| 6 | | | 10 200 | n.d. |
| 7 | | | 9 051 | 9 790 |
| 8 | | | 4 867 | 5 049 |
| 9 | | | 2 163 | 1 249 |
| 10 | | | 1 135 | 1 013 |

(BEIS) www.beis.bia-bg.com

1.79 . .

15 2013 .

0.032 .

0.0304 .

profit.bg, 2013-04-03

26 2013 .

" "

" "

" 10 56

" "

" "

589 .

, 2013-04-10

SOFIX,

0.49 .

profit.bg, 2013-04-08

BG TR30

() (01-05 2013)

| | |
|----------|----------------------|
| Premium | 1 526 646.22 |
| Standard | 647 258.46 |
| | 1 365 282.39 |
| | 11 462 399.24 |

BGREIT: 08.03.2013 – 09.04.2013

BG40: 08.03.2013 – 09.04.2013

SOFIX: 08.03.2013 – 09.04.2013

403 309 .

- SOFIX 0.59%

0.11%.

, 2013-04-04

: " "

" "

2011 . " "

713
2.25

605

9

1.14

170

"
349
, 2013-04-04

9-

, 10 2013

100%

, 10 2013

2

2

2014-2020

" " " "

-

, 10 2013

100

" "

100

660

1%

, 09 2013

Unique Estates

Investor.bg, 08

, 08 2013

, 08 2013

Investor.bg, 08

2013

, 04 2013

20

200

200

"Kosher".

7,9%,

0,6%.

2,2%, 4,9%, 3,1%, 3,8%, 15

0,7%.

1,1%,

4

„ „

„Yutong bus Co., Ltd”

(6

) (25)

50 000

, 12 000

1 120 000



„

1.

„

2.

15% 2013 17% 2009 2009 25% 2014 5% 25- 2010

3.

„

735 43 Doing Business 2013

70%

2016 .

, 07 2013



: 10-12.04.2013

: . I,



: 26.01-15.04.2013

: , , ." " 1-2



: 30.05.2013

: , ,



ESPO 2013

: 30-31.05.2013

: . . ,