



1 .

250 .

250 .

" " ,
" " ,
3 ,
,06 2013

5-

" " " "

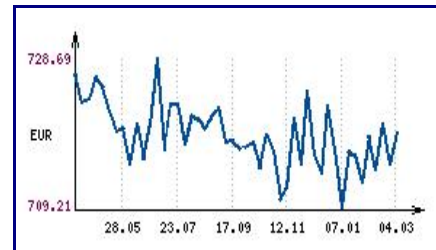
" " " "

Kloeckner,

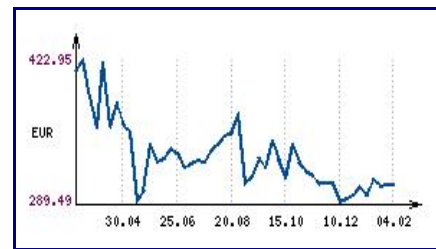
" "

10 15 ,

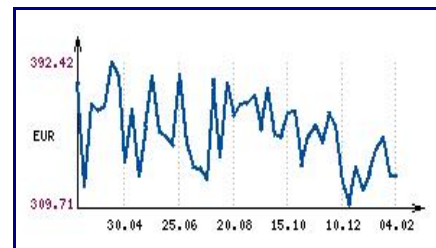
04.03.2013



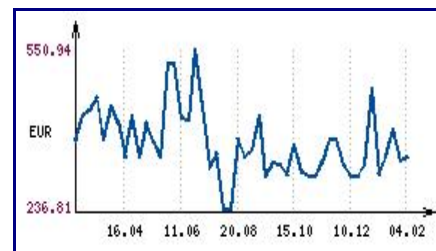
04.02.2013



04.02.2013



04.02.2013



: imoti.net

2011 . Kloeckner – "
 " 38.9 . .
 , 05 2013
 " " " "
 OTE " "
 , OTE , " "
 " " " , " "
 " " " , " "
 - Telenor, Orascom, Turkcell,
 Turk Telekom Deutsche Telekom.
 , 04 2013

1 , 2012 . 1000
Voleex C10

- Steed 5 ,
 Great Wall - Hover H6, SUV 2012 . 1
 C10 1 000 Great Wall Voleex
 , 4000 ,
 , , , ,
 , 01 2013
 " " **100%**
 - , VTB Capital
 , 99.72% , "
 " " "
 - , Artio,
 11.6 , 4.6% ,
 2007 .
 2.806 11.30 . Artio " , 94.09%
 , - 99.72%.
 100% (. . squeeze out).
 , . . 2.806 .
 , 01 2013

Standard & Poor's.

536.5

2011 . 297.8 477.3

(293.4 . .),

2002 .

2012 . - 90.2 . .

45.5% -

600 . .

2013

12.4%

12.4%.

()

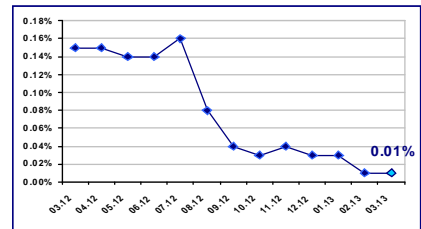
06.03.2013

EUR/BGN	1.95583
USD/BGN	1.50056
GBP/BGN	2.27475

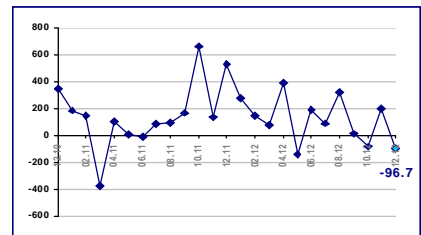
USD/BGN



0.01% 01.03.2013

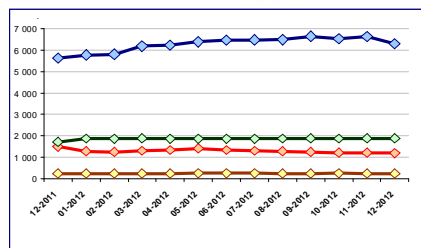


-96.7 . EUR 2012

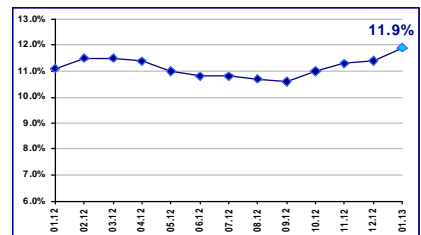


2012

Към нефинансови предприятия Към домакинства и НТООД
Жилищни кредити Други кредити



11.9% 2013



2012 . - () 12.4%.
 , 04 2013

E , **38%**
 10,65

2013 . 93,87%
 2007-2013 .
 11,35 . , 9,35 . , 1,99 .
 , 4,291 . 38%
 , 3,511 .
 , 01 2013

2013 . 5,7
 - , , ,
 " " 3,6
 ,
 , 54,1%
 44,5%
 , 01 2013

10

"
 ",
 , 2011 .

No_ 2011			(. .)	
			2011	2010
1			43 266	52 699
2			12 622	31 397
3			3 163	2 812
4			2 911	307
5			2 461	993
6			1 347	1 046
7			1 054	1 109
8			782	2 027
9			775	775
10	2007		540	22

(BEIS) www.beis.bia-bg.com

24 , 2013-03-06

Euroins Romania

Euroins Romania

0.9%
11.428
profit.bg, 2013-03-06

7
61,4

21.52 16.68%,
5.29 3.32%
5% 3.42

28 2013 153%
189 31 2012
90% 129 28% 33,5
70% 12,3 2012
36% 4,7 180% 1,7
203% 10
631 2012 4,7 2011
24,3 "TBI Bank
" ()
" , 2013-03-04

	(25	-1
2013) ()		
Premium	1 346 822.10	
Standard	30 109 034.05	
	354 322.01	
	41 319 742.06	

BGREIT: 05.02.2013 – 05.03.2013

BG40: 05.02.2013 – 05.03.2013

SOFIX: 05.02.2013 – 05.03.2013

4,4329%	28	2013 ..						6,5028%
()						
		-		/ - /				
Asigurare-Reasigurare		4,2238%	6,4238%	27	2013 . Euroins Romania	21,5168%	16,682%	25
2013 .								5,2877%
3,3245%	25	2013 ..				5,007%	3,4213%	28
2013 .								
. , 2013-03-04								

KBC Group - Patria Corporate Finance.

, 2013-02-28

206 025	" "	1986
206 025	" "	66
30	05 2013	13,5
06 2013		13,5
2012	„Colliers International“	40 000
	„Bulgaria Mall“	
2013	„City Mall“	
	- „Sofia Ring Mall“ „Paradise Center“	
	- „The Strand“	
	„Giga Mall“ „Carrefour“	econ.bg, 04 2013
905 000	40% 2014	22.5
	13%	
04 2013		
	2009	44.6
	28	2013

International

Colliers

Colliers International

„ ”. Colliers 2002 .
 „ ”
 8 ”
 The Mall, Mall of Sofia, Mall of Plovdiv, Grand Mall, Burgas Plaza, Park Mall. -
 Peek&Cloppenburg, New Yorker Carrefour 2008 . Inditex, H&M,
 Colliers .
 ”

Stroimedia.bg, 04 2013
 ”.
 : 4% 2013 .
 2012 2013 .
 (25 000 – 45 000),
 – 70 000 .
 (150 000),
 1-2 (2-5 ,
 2009-2011 .)
 –
 : 2% 2011- 3%
 2011- . 2013 ..
 4%. -
 2012 – 25% .

profit.bg, 01 2013
 14
 14
 500 1000 . , 15 600 34 000 .
 1200. 13 600 22 300 . 700 . , -
 514 ” “ 3635 . -
 9,5 5 400 . 4 9.30 295 900
 16,00 3

Stroimedia.bg, 28 2013
 ” ”
 - ,
 . - ,
 2011 . 20 .
 , 28 2013

➤ _____ " _____ 2013"

: 11-12.03.2013

: Berlin

➤ SEO _____ 2013

: 22.03.2013

: _____ , _____ . 147

➤ _____ - _____

: 25-27.03.2013

: _____ , _____ . 147