

" () 26% " - .
 " 34% " - " 1.305 . .
 8.9 . . ,
 ,
 ,
 2008 . , " .
 " " 99", " " - " " .
 , 34%, 26% .
 , 24 2012

" , -
 " " " " .
 44,7% , " 43,55% -
 " " 1,15% . " 4,4% , " "
 .
 24 , 24 2012

" " ,
 " " - ,
 16 2012 .
 () ,
 () ,
 30 2011 . ,
 " " .
 , " " ,
 48.7 . . ,
 2009 . ,
 2011 . 32 . . ,
 12 . . ,
 , 23 2012

292 . .
 " " " " " "
 " () 292,3 . " 2011
 .
 " " " "
 - 184,4 . . " " " "
 " " 107,9 . , " 66
 " - 2", " - " , " " " ,
 " " . " "

" () - 76,6 .

" . "

, 23 2012

VTB

Capital e

VTB

" ,

" .

-

" ,

" .

" ,

" ,

"

-

" .

-

, 20 2012

12 .

8

4

100

70%

14

8

5 -

100

1 454 700 .

1 -

1,885 . .

3 4

, 19 2012

” - “

” .

35

” -

, 19 2012

23,55%

23,65%

18,758

1,1%

1,9%

7,433

14,1%

32,432

2011 ..

,25 2012

0.2 %

0.2%

2.6%

2011 ..

3.4-3.5

14

2.7%,

3.9

885.32

1457

1429

,24 2012

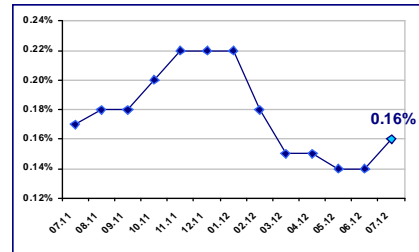
25.07.2012

EUR/BGN	1.95583
USD/BGN	1.61786
GBP/BGN	2.51231

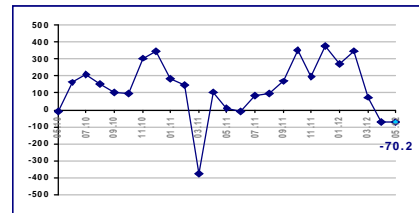
USD/BGN



0.16% 01.07.2012

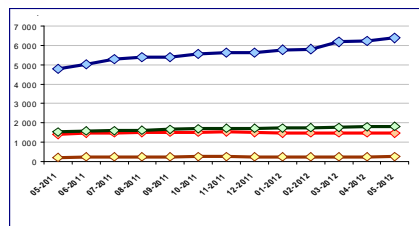


-70.2 . EUR 2012

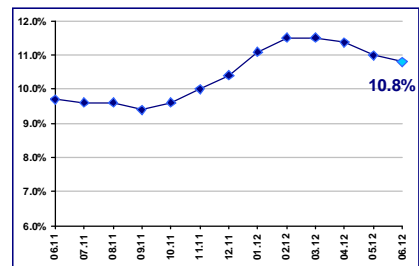


2012

◆ Към нефинансови предприятия
 ◆ Към домакинства и НТООД
◆ Жилищни кредити
 ◆ Други кредити



, 10.8% 2012



/

2012
 111.7% 20.9% - 6.6% 16.7%
 (+4) - 108.5% - 132.4% - 123.3%
 (-33.0), (+3.8), 2011 (+3.7) (+3.6) -
 (-1.8) (-1.5)
 (+11.0) (+8.2) / (+17.2)
 (-4.1) (-20.0)
 , 24 2012

:

"
 " "
 " "
 , 24 2012

10 78,2 72
 77 67,8 339 2012
 334 2011 770,1 68,8
 , 23 2012

Fitch

Fitch Ratings
 Fitch
 Fitch
 () 0,9% Fitch 2012
 Fitch 2013 1,9%
 2014 - 2,5% , 19 2012

2011 .

No_ 2011			(. .)	
			2011	2010
1			80 207	74 420
2			50 781	45 443
3			47 208	57 128
4			30 844	1 774
5			30 619	30 998
6	-		13 047	12 344
7			13 026	11 167
8			5 090	5 086
9	13		4 252	3 995
10			2 985	3 557

(BEIS) www.beis.bia-bg.com

90

180

89.9

500

3

2012

2013

3

20

2012-07-25

() (16 - 20 2012 .)

Premium	811 942
Standard	729 831
	1 691 566
	4 134 850

BGREIT: 25.06.2012 – 24.07.2012

Date	Value
25.06	69.5
29.06	70.5
03.07	70.5
07.07	69.5
11.07	68.5
15.07	69.0
19.07	73.5
23.07	74.0

BG40: 25.06.2012 – 24.07.2012

Date	Value
25.06	107.5
29.06	107.0
03.07	108.0
07.07	105.5
11.07	107.5
15.07	107.0
19.07	109.0
23.07	108.0

SOFIX: 25.06.2012 – 24.07.2012

Date	Value
25.06	292
29.06	292
03.07	296
07.07	289
11.07	291
15.07	295
19.07	301
23.07	302

2006

140 719

, 2012-07-24

"

- "

(Y40A): -

19.06.2012 ..

17.07.2012 .

; -

. 1

"

" 06.03.2008 . -

()

210 000

, 09.06.2012 .

Money.bg , 2012-07-24

"

" 908 . .

2012 .

"

908 . .

14.35 . .

91% , 13.01 . .

81

" , .

" , .

"

" , .

. 30

60

10.59 . .

64.57 % .

) 340

(10

, 20

profit.bg , 2012-07-24

" "

() .

1.48 . .

1 . .

" "

"

"

"

"

"

"

"

"

15-20%

1.48

" . .

"

"

"

500 . .

"

"

, 2012-07-23

2011 ..

(80%)

7

2012 .

40%

2012 . 40% , 5 0,1 ., 11
 0,02 . 2 2012 . () (). 50%
 , (4 2012 .)
 100% 2007 .
 31 2010 . 1,06 . ., 108 . .
 - . , 2012-07-20

06.07.2012 . :

2012 ., . 65, . 1, . 6 IV
 - , 18.07.2012 .
 :
 - - (4DA)
 - - (204)
Money.bg , 2012-07-19

" " **450**
 17 2012 .
 , . 59
 450 000 , 10% 45 000
 30 2012 ., 10%
 " , " 360 000
 23.07.2012 .
Money.bg , 2012-07-19

30 2012 .
 , 14
 2011 .
 ,
 ,
 3 2012 .
 , NBG 25
 48,5 . ., 2016 . 30 2011 .
 NBG ,
 ,
 ,
 , 2012-07-19

“ ”, “ BG 30”, “
 ”, “ ”, “ ”,
 ”,

“ ” “ ” .
 ” ” .
 ” ” .
 profit.bg , 2012-07-18

-

, 13 2012 ., 13:05 ., 5 ., 2012-07-17

43.2 . . ” ” 140 719

30 2012 ., 43.213 ., 307.09

. 96.35% , -

), 89.16% ” ” (10 , 3.65% -

, . - ” ”

84 . (59% , , ” ”

). 2011/2012 135 . . (96% 2011/2012 30) 26.78

profit.bg , 2012-07-16

„ „ 20 „ 2007 „ 3 „ 25 2012 „ Investor.bg 6%, 15-16 „ 5%. „ dn.es.bg, 25 2012 „ 21 „ 19 2012 „ 4 „ 13 „ 103 67 000 „ 20 2012 „ 60 „ 1000 „ 15 „ 1000

			”	”	”	”	-
					120		
000				11		11	10
	- 12			”	”	“	”
5-6					10		
			27-28				33-34
							, 25 2012
230 000		”	”				
	910					2 730	
						”	”
					2		
			170				, 24 2012
		€300					
							300
()							
							, 24 2012
	”	”		”	”		
Mall Rouss	”	”					
			RESB	RESB (Real Estate Services Bulgaria),			
	”	”					

2013 2014 .

, 23 2012

Tishman

Tishman International Companies

2009 .

Tishman

18 000

Tishman

, 23 2012

70- 80 %

9000 182 / / ,

2008 ..

8-10 1200-1500

350-400 / .

3

" " 3000 2.4

, 23 2012

(51%)

50 80 . . -

10% 80 120 . . 120 . .

33% 8%

8% Arco Real Estate.

2011 .

50 80 . . , 30 50 .

2012 .

120 . .

30 . .

-

- 9%

profit.bg, 20 2012

695 .

2012 . 98.1 . .
, - 72.5 . ,

2006-2008 .,

150 000

965 .

(740 . .), 450 (730 . .) (590 . .).
profit.bg, 20 2012

10 20 . . 30-40

15-18
30-40

, 19 2012

"Stucky"

"Stucky" e
"

3000 300

, 19 2012

2011
Arco Vara.

50

. 15 20

80 . , ,
 . 8%
(80 120 .) - (120 .), 10 33 8 ,
 " "
 30 .
 , -
 , 19 2012

2012 . CBRE
 6,3% - .
 218,18 , " -
 7,1% 13 .
 3 5 , 1 3
 . -
 17,2% .
 16,7%, 16,3%, 13,6% 13,5%.
 12-
 2012 . 3 40%
 . 49,4%.
 42% 40,4%.
 Investor.BG, 19 2012

" " " " "
 1 551 . " " "
 161 380 . " "
 " , 13 " "
 " IV" " IKEA.
 " " "
 .
 Econ.bg, 19 2012



Debenhams, Bulgaria Mall.
 New Look LC Waikiki.
 Marks&Spencer
 Debenhams.
 Debenhams department stores -
 The Mall Serdika Center. Peek&Cloppenburg, P&C
 Debenhams
 Debenhams Bulgaria Mall. 2800
 H&M Inditex (Zara,
 Marks&Spencer.
 Bershka, Massimo Dutti... - Paradise enter (") Sofia Ring Mall (department store,
 IKEA O),
 Debenhams.
 Fourlis Group. New Look, Sofia Ring Mall
 Colliers,
 Debenhams, ()

Forton International

2-3
 2010 : ZARA,
 Humanic, Deichmann, New Yorker
 H&M C&A Takko,
 Serdika Center Megamall Lulin, Projektmanagement,
 " " ECE
 50 - 60%
 (Bulgaria Mall 85%). Carrefour Paradise Center (Bulgaria Mall Megamall Lulin. Ring Mall - Cinema City Paradise Center, Sofia Cinegrand. Bulgaria Mall @Home. " " " " H&M, Bulgaria Mall Sofia Ring Mall. H&M - Paradise Center Reserved, Cropp town, Mohito, Serdika Center. Inditex, - Zara, Sofia Ring Mall. Paradise Center H&M LC Waikiki, Marks&Spencer. Marinopoulos (Carrefour). 2011 2.4 20% Burgas Plaza, Marks&Spencer 350

Yorker, Humanic, Deichmann,

New
Mango, Benetton, Next.

"

",

2010 .

Humanic

"

",

Capasca,

"

",

, 20 2012

↓ _____ :

: 26.09.2012, 29.09.2012

: *****,

↓ EXPO REAL 2012

: 08-10.10.2012

: ,

↓ _____ :

_____ .
: 12.10.2012

: *****,