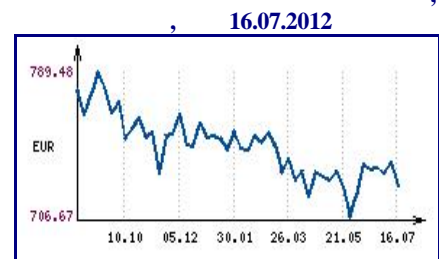
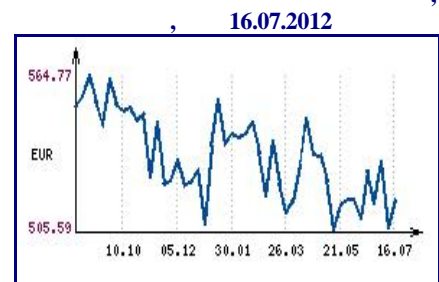
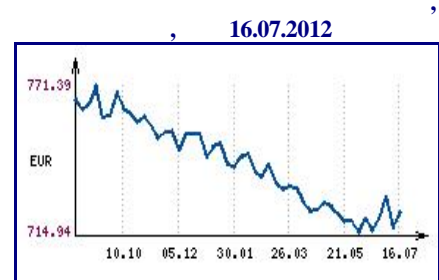




„  
3  
300  
32  
17 2012  
Factiva.  
1000







**Fitch**

Fitch Ratings

" " " " " "

Fitch

Fitch

( ) 0,9% 2012

Fitch

1,9%, 2014 - 2,5%.

Investor.BG, 18 2012

473.8

72.2

61.5% ( 2011

2012)

0.5% 0%

, 17 2012

509.8 , 182.4

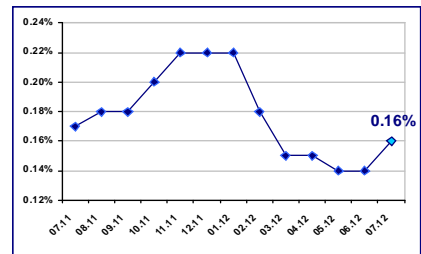
**18.07.2012**

|         |         |
|---------|---------|
| EUR/BGN | 1.95583 |
| USD/BGN | 1.59257 |
| GBP/BGN | 2.48786 |

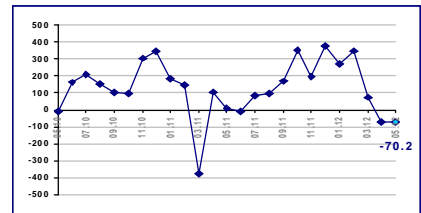
**USD/BGN**



**0.16% 01.07.2012**

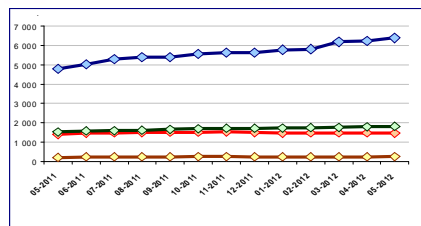


**-70.2 . EUR 2012**

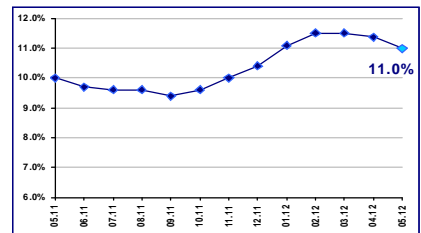


**2012**

Към нефинансови предприятия Към домакинства и НТООД  
Жилищни кредити Други кредити



**, 11.0% 2012**



2012 . 30.7 . ,  
 104.3 . 2011 . -  
 64.2 . , 104.2 . 2012 .  
 2011 .  
 2012 . 417.5 . , 182.8 .  
 2011 . FOB 1837.3 . 2012 . , -  
 10.7% 2011 . (FOB - )  
 2012 . 2 254.8 . , 19% , -  
 , 17 2012

2012 . 2012 . 99,0%, . .  
 1,0%, . ,  
 2011 .) 0,5%, ( 2012 .  
 2011 - 2012 . 2012 . 2011 . 1,6%.  
 2011 . 2,7%. - 2010 -  
 (-2,4%) (-1,8%), -  
 (+0,5%). (+0,6%) ,  
 0,2%,  
 0,5 0,3%.  
 , 13 2012

:

1,4%  
 1,3%  
 , 13 2012

**10,8%**

10,8%, 0,2 .-  
 , ,  
 ,  
 2011 . 9,56 , 2011 . - 8,87 . .-  
 11,5%. ,  
 , 12 2012

**6.5** .

1.84 . . 942 . , 950  
 , 6.5 . ,  
 7 . .

10

2011 .

| No_ 2011 |     |  | ( . . ) |         |
|----------|-----|--|---------|---------|
|          |     |  | 2011    | 2010    |
| 1        | -   |  | 146 988 | 153 234 |
| 2        | -   |  | 63 525  | 61 188  |
| 3        |     |  | 51 950  | 52 927  |
| 4        | +   |  | 30 167  | 33 895  |
| 5        |     |  | 22 277  | 22 277  |
| 6        |     |  | 20 961  | 23 072  |
| 7        | / / |  | 18 162  | 17 057  |
| 8        |     |  | 11 810  | 12 651  |
| 9        |     |  | 4 031   | 4 119   |
| 10       |     |  | 3 509   | 3 719   |

(BEIS) [www.beis.bia-bg.com](http://www.beis.bia-bg.com)

Target 2 Securities (T2S),  
( ).

20%

25.6%

50%

T2S, , 2012-07-17

12

7.8%

27.56  
2011 .,

17

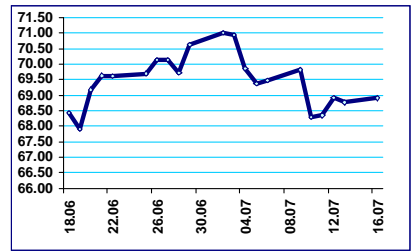
43%

, 2012-07-18

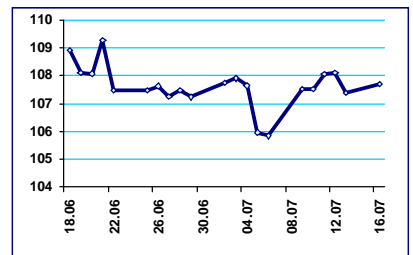
(09 - 13 2012 .)

|          |                   |
|----------|-------------------|
| Premium  | 558 216           |
| Standard | 29 652 664        |
|          | 9 736 085         |
|          | <b>41 764 832</b> |

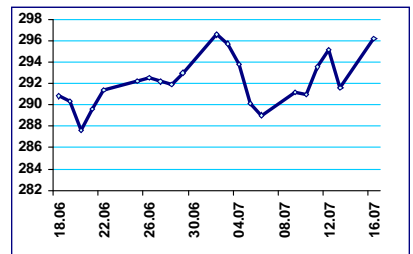
BGREIT: 18.06.2012 – 16.07.2012



BG40: 18.06.2012 – 16.07.2012



SOFIX: 18.06.2012 – 16.07.2012



( ).

, 2012-07-18

40%

40%

, 2012-07-18

2007

2012

31

100".

2011

4

, 2012-07-13



“ ” 12

790 930 / . . .

10 000

15 2.263

520

3.24%

, 18 2012

50-70%.

30-40 . . .

30 000

475 / . . .

, 17 2012

4

Klassa.bg

, 16 2012

" "

2 . ,

, 16 2012

1500

2014 " "

Ford

Transit. , 06 2012

300 000

300 000

Profit.bg,

” ”. 40%

. 15%

80%

, 17 2012

” ”

” ”,

2003 .

2003 ..

, 16 2012

?

24 .

4000

2001 .

” 58

, 16 2012





Colliers.  
12  
2012 .  
Bluehouse Capital,  
" " Baumax " 08" .  
35- " " 9 . Bluehouse,  
big-box ( )  
Praktiker  
" " " " 1 2  
Radisson Blu,  
Gort  
Securities, - 10  
15 000  
20  
(56 000 . . )  
Tishman Sofia Airport Center,  
- GE Real Estate.  
" " ( Bernard Izgrev Tower)  
9%

10%",

, 16 2012

4%

4%

6

“ 3%,

2,5%,

5

3%.

15%

2011 ..

10%

45

45

, 13 2012



:

: *21-22.07.2012*

:

👉 EXPO REAL 2012

: *08-10.10.2012*

: ,