



Viohalco

Viohalco SA Euronext.

1 1.

810 13-

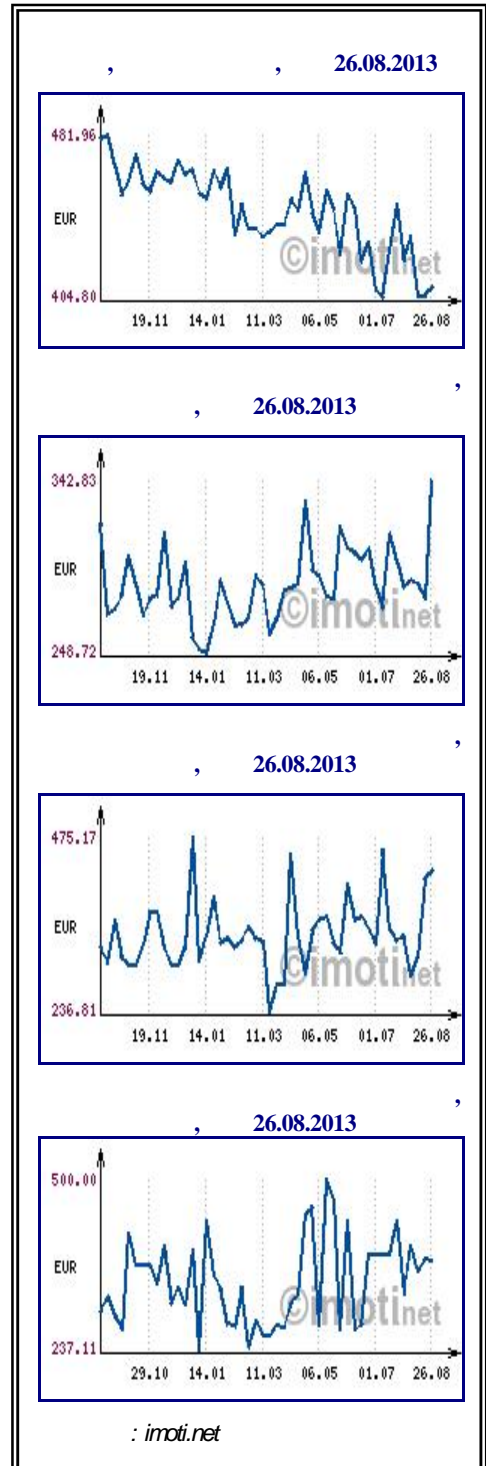
60%

3.3 14%

8000 76.3 1994 Viohalco " " " " " (").

18 2013 .

2000", " " "



2013 . 71.5

492.6

488.5

2012

800

80.7

59.5

18

2013

226

306.7

2012

2013

399.3

507.1

469.8

245.8

278.7

(581.9

(94.1

2013

372.8

(0.9%

2013

645.9

(1.6%

226.1

2012

249.6

3.4

3.4

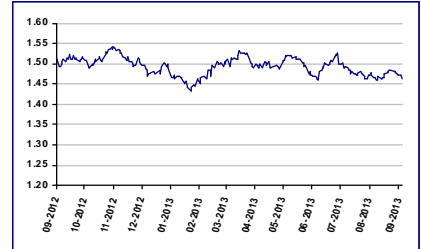
2012

Econ.bg, 18

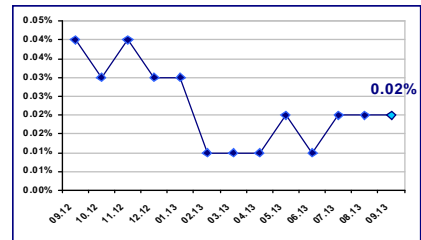
18.09.2013

EUR/BGN	1.95583
USD/BGN	1.46438
GBP/BGN	2.32920

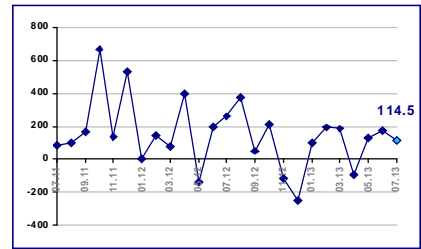
USD/BGN



0.02% 01.09.2013

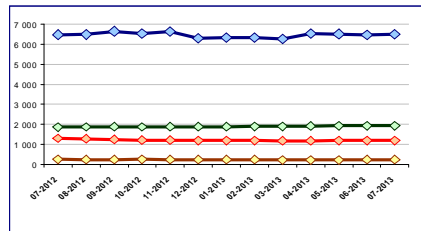


114.5 . EUR 2013

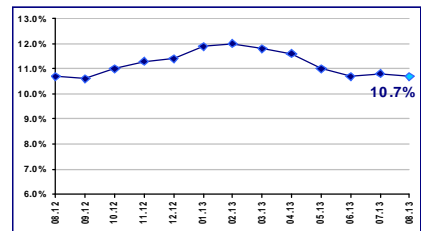


2013

- Към нефинансови предприятия
- Към домакинства и НПО/Д
- Жилищни кредити
- Други кредити



10.7% 2013



2013 . 2012 6.8% 2013 .
 2.5%, / 0.2%.
 2013 .. /
 8.8 5.3%.
Money.bg, 11 2013

2012 .

2012 . 40.6 . . 2011 .
 2.5%.
 - 11.1%, - 8%.
 (CIF) 2012 . 49.8 . . 8.8% 2012
 21.7%, 2011 . -
 (3.3%) (2.1%).
 2012 . (FOB - CIF)
 2011 . 2012 . 9.2 . . 3 . .
) FOB/FOB (2012 . 6.8 . . 2012 .
 2011 . , , 2012 .
 (10.4%) ” ” ”(23.7%).
 (.)”.

econ.bg, 11 2013

10

” ”,

2011 .

No_ 2011			(. .)	
			2011	2010
1	-		294 070	292 648
2			135 147	143 809
3			131 320	117 275
4			105 354	113 573
5			75 279	68 152
6			62 842	60 831
7			56 183	43 334
8		-	50 737	47 433
9	-		34 690	32 109
10			30 555	29 576

(BEIS) www.beis.bia-bg.com

" " 3 . .

" " , 3 . .

13

" " , " "

" " ,

" " ,

2.5-3 . . , 300 1200

, 2013-09-16

EVN

20%

" "

" "

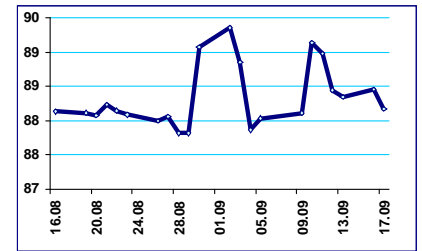
, 2013-09-13

(09 -14

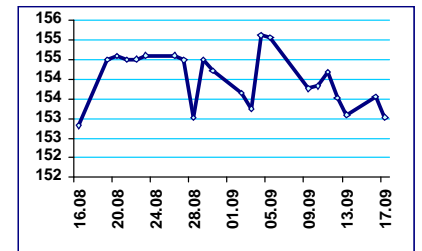
2013) ()

Premium	251 932.96
Standard	2 208 336.72
	309 249.74
	10 115 543.71

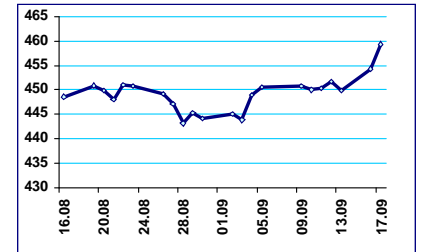
BGREIT: 16.08.2013 – 17.09.2013



BG40: 16.08.2013 – 17.09.2013



SOFIX: 16.08.2013 – 17.09.2013



36

()

9%

10

2013

.6 13

" " 2014 .

" "

" "

2012 ,, 23 .

30%

2014 .

" " 67.2 . .

, 18 2013

" "

()

" "

" "

2013

27

mzh.government.bg. stoyanova@

, 18 2013

" "

21

50%. „ "

85 . , 700

Citybuild.bg, 16 , 2013

, 16 2013

" "

" "

15

4

50 000

18

2013

0

1.17

16

2-3

34

96"

18

2013

"

"

4

25

1500

1200

2011

" ()"

2.496

440

18

2013

2012

()

- 374 , 3.6 . 2009 .

2011 . 361 .

,15 2013

5

- 14 . 2012 85

2013 .

0,214%

37,7 .

(86,4 .) (80,9 .) .

900 .

- 434 . 2 .

1 .

1,4 . 2013

,13

" "

" "

" "

" "

" "

,12 2013

Global Property Guide.

0,87% . 0,95% ,

4,6% . 4,52% ,

4,09% . 42 - Global Property Guide,

36-

- 12,74% 7,68%

Investor.bg, 12 4 2013



: 30.09.2013, 09:30-17:00

: 20 16, BNC



: 25.09.2013- 26.09.2013

: , , ." " 16-20



IT

: 23.09.2013

: , , , ." " 1



: 19.09.2013

: , , , ." " 1