



"

550

" " 28 ,

" " 2

"

552.7

" " 4.6

- 400

, 9 2013

Telenor " "

Telenor " "

717 . e OTE.

Telenor , -

" " Telenor,

Telenor 2001 . 2006 .

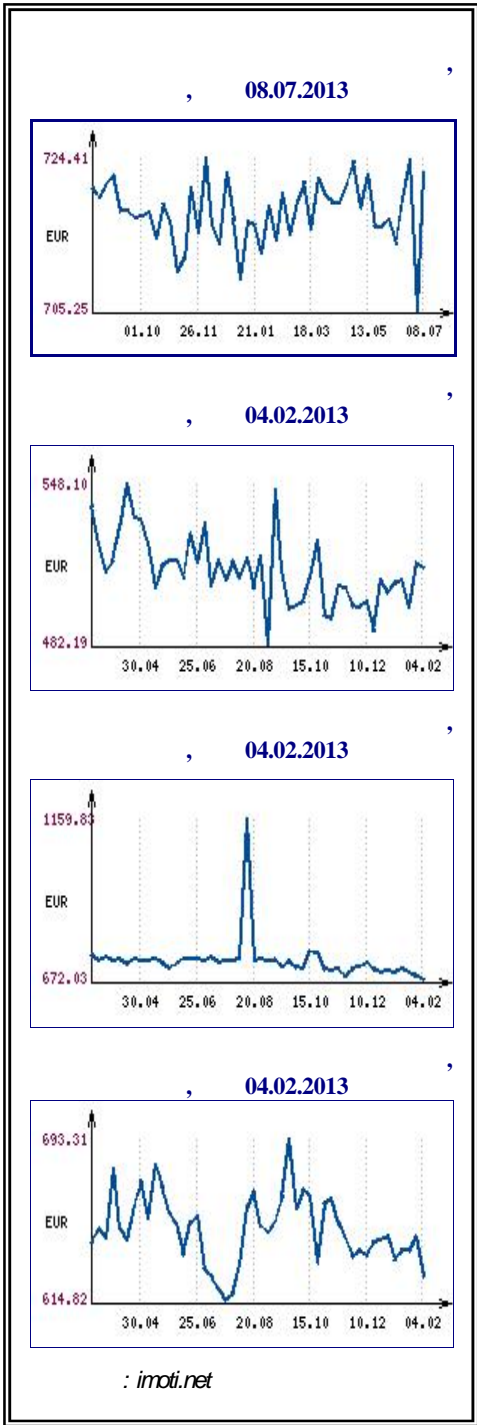
Telenor - .

2009 . 2010 .

Uninor -

Telenor 67.25%.

, 8 2013



50% " " .
- " " .
90 " ' " 180 " " .
(" " " " " ") 550 ' .
,
" " 650 . .
, 2011 ' 175 . .
105 . . 46 .
, 33 . . 2010 . - 182 . .
- 153 . ..
,5 2013 .



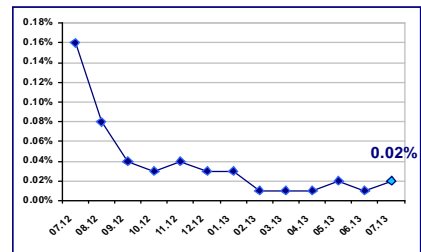
10.07.2013

EUR/BGN	1.95583
USD/BGN	1.52122
GBP/BGN	2.26108

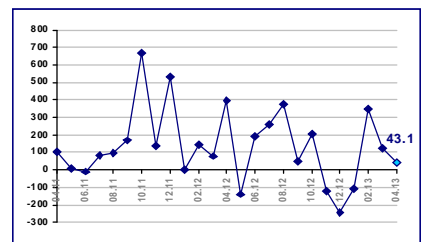
USD/BGN



0.02% 01.07.2013

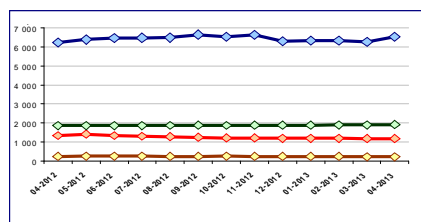


43.1 . EUR 2013

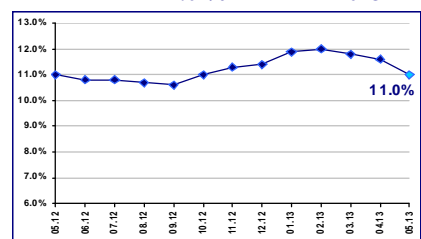


2013

◆ Към нефинансови предприятия ◆ Към домакинства и НПООД
◆ Жилищни кредити ◆ Други кредити



11.0 % 2013



2014 .,
 , 100 000 . 8 . . 400 000
 , 08 2013
10

”
 ”,
 2011 .

No_ 2011			/ (. .)	
			2011	2010
1			18 283	6 282
2			16 885	7 157
3			9 506	12 982
4			6 246	13 654
5	-		5 935	1 683
6			4 672	4 663
7			4 606	512
8			2 691	-226
9			2 600	4 135
10			2 576	1 912

(BEIS) www.beis.bia-bg.com

8

3-

Money.bg, 2013-07-10

2012 .

0,244 . 13,054 (

0,228)

70%

18,648

6,9% , 2013-07-10

0.073 0.06935

1.9 " 334 859

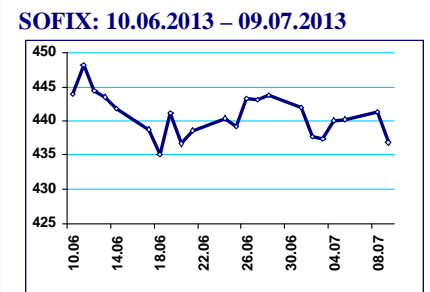
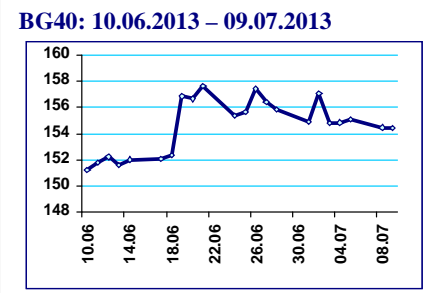
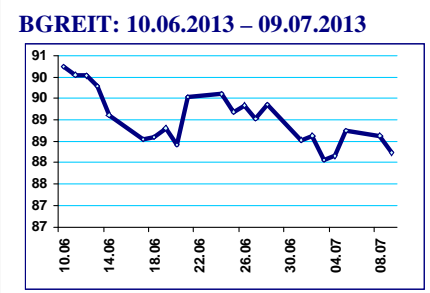
257 " " , 81

11 2013 .

profit.bg, 2013-07-09

() (01-05 2013)

Premium	1 435 403.88
Standard	1 435 403.88
	1 006 699.82
	6 874 152.63



2011 . MBL 25 30%.
 20.8% 21.8% 2012 .
 Colliers. 34.5 . . . ,
 189.6 . . . ,
 - " - Capital Fort . " " Bulgaria Tower
 . " . "

, 9 2013
Sofia Ring Mall

Sofia Ring Mall
 " Europ Property Awards 2013. Sofia Ring Mall
 2014 .
 100 . . Sofia Ring Mall 200
 , 10 3 500 . .
 " " ,
 . Sofia Ring Mall Sofia Ring Mall
 120 . .
 . Europe Property Awards - 30%
 Awards 2013 . , International Property
 profit.bg, 9 2013

Plaza West –

- Plaza West -
 Baumax.
 " 50
 . Plaza West 37 750 " 25 600
 . 725
 Ikam1.com, 8 2013
70 . . " "
 70 . . " " ,
 . 2007 .
 , " " 3
 " " " "

82-

67-

blitz.bg, 8 2013

” ().

550 000

900 000

4 -5

10-15

, 8 2013

” ”

”

profit.bg, 5 2013

45,4

2012

25,52%

770,338

2012

45,4

2014-2020“.

" . - ,
econ.bg, 5 2013 , .

" " "

, .
" , , , , " 41-
, .
() , .
() .
-

Investor.bg, 4 2013

- 7.2% . , 1.5

- 4.2% . 5.5%,

6.9 - 2.2

10.8%

14% . 8.5% .

4.2%, -

2013 . , " "

2013 . - ,

0.3%

1.5%, - - 3.1% .

8 2013



: 12.07.2013

: . III 215, , .14, ,



: 13.07.2013- 14.07.2013

: , , . I



: 25.09.2013- 26.09.2013

: , , ." " 16-20