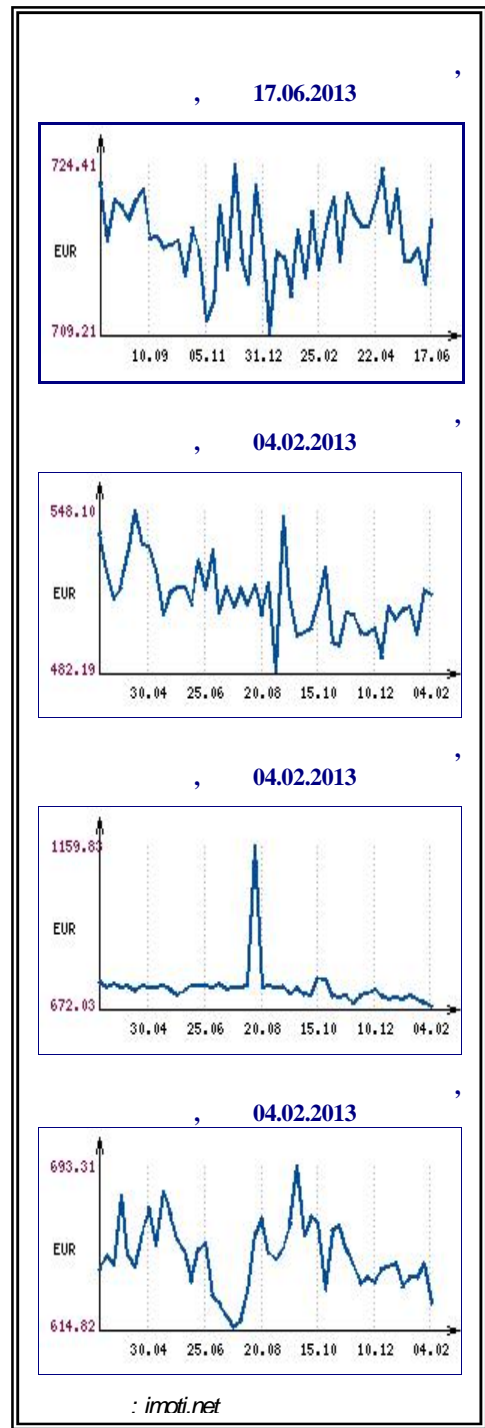




“ ” **bTV** “ ”
bTV Media Group,
-
Group e CME, bTV Media
Group e , ,
, a
a e
, “ ”
,18 2013
, “ ”
- 250 000
1 013 634 . 8
2 1 267 043
“ ” ,
“ ” “ ”
“ ” “ ”
2001 “ ”
1920, 2001.
120 000



7- 20 .
 2,82%
 7-
 2020 (), 16 17
 2,82 . 20 .
 , 33,97 .
 1,7. 82,90%
 , 13,60%,
 1,75
 17 2013 . -
 : -
 6,11%, - 6,00%, - 5,05%, -
 4,60%, - 3,91%, - 3,67%, -
 3,44% .
 100 .
 Money.bg, 18 2013
 10
 10 -
 2012 .,
 38,7
 2012 .
 - 387,5 .
 2013
 395,2 . 1%
 61% -
 2012 ., 1,028 .
 2,6%
 2013 .
 37,2 . -
 2012 .,
 69 . -
 (243,9 .), (62,2 .)
 (37 .). -
 (-33,4 .).
 , 18 2013
 1,2%
 ()

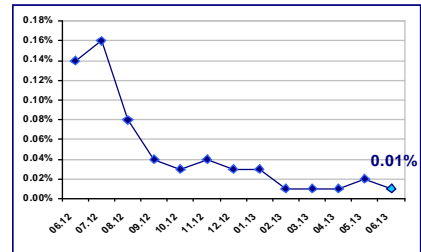
19.06.2013

EUR/BGN	1.95583
USD/BGN	1.46241
GBP/BGN	2.28431

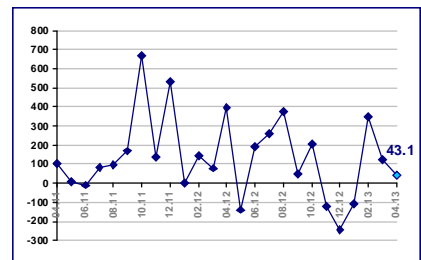
USD/BGN



0.01% 01.06.2013

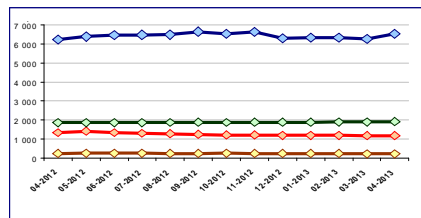


43.1 . EUR 2013

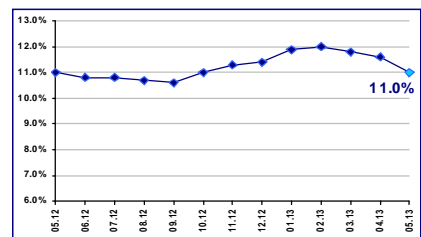


2013

Към финансови предприятия Към домакинства и НПООД
 Жилищни кредити Други кредити



11.0 % 2013



24 (57)/ 20 2013

() 1,2% , 1,8%,
 2,1%, 2,4%, 2015 . 3%.
 - 1,4% .
 1,9% 1%. , , 2015
 1,6% , 2015
 2012 . 2,5%.
 , 2,7% 2012 . 5,6% 2011 .
 , 14 2013
 0.1% . 2%,
 - (0.4%) ,
 (1%).
 (2.7%),
 2012 . 3%.
 , 13 2013
10
 " , 2011 .

No_2011			/ (.)	
			2011	2010
1			15 288	13 955
2			12 787	4 688
3			5 912	7 397
4			5 734	163
5			5 208	531
6			4 468	.
7			4 460	2 352
8			4 320	374
9			4 229	2 955
10			3 895	3 323

(BEIS) www.beis.bia-bg.com

Quarzwerte

" " 4.156 . " " ,
 Quarzwerte, ,
 - , " " 4.156 .
 - , " " " (95%),
 " " ,
 () 4.94 (9.88%)
)
 ,
 95% " " ,
 " 28 " ,
 (12 2013 .)
 ,
 25% Quarzwerte

, 2013-06-17
79 . **154,5**

- " " " " " ,
 ,

(10-14 2013)

()	
Premium	2 696 640.34
Standard	3 370 287.22
	589 015.47
	47 242 128.86

BGREIT: 17.05.2013 – 18.06.2013

BG40: 17.05.2013 – 18.06.2013

SOFIX: 17.05.2013 – 18.06.2013

- 22 .

154,5 .

" " " " " ,

93,5 . ,

60 .

6 .

, 2013-06-14
 , 2013-06-17
 2013 ..
 4 540 1 135 /
 1 338 245 633
 2012 . 6 634
 - 26 464 903 / 13 2013 .
 188 933 , 76,09% 30,05 .
 188 740 30,16 . 193
 . 20 2013 . 2012 . 0,493
 2,282 . 189 . 39% 12

(JT8) 15.07.2013 . 11.00 .
 2. , . 114 .
 . 114, . 6 . 29.07.2013
 . 11.00 . 14 ,
 01.07.2013 .
 27.06.2013 .
 Money.bg, 18 2013
 " " -
 2007 . ,
 . ,
 . - () ,
 75 ,
 4 .
 , -
 280 . , 5000 . 21
 -
 (Good manufacturing practice - GMP).
 , Bosch, Klockner,
 Uhlmann, LBBohle, FETTE, ESCO, Mediseal .
 , 14 2013

" "

" " " "

" " " " 127 .

" " (" ")

2000 , ,

400 , . ,

- " " (, " " ()).

" 2000", " " " "

, 19 2013 .

-

-

-

" " " "

-

Behr-Hella

Thermocontrol (BHTC).

" "

" "

-

1

1

,

,

o

40

, 18 2013

-

,

,

TouristMedia.

60%

22 10

Stroimedia.bg, 17 2013

.

-

,

" "

" "

" "

" 98"

" "

, 17

2013



-

,

().

7 9-

1300

: http://www.etailer.bg/prouchvane_may2013.html

200 ,23 - 600 ,18 4000 - 4000 , 13 - 2000 .

4000 10

200 , 3 6 - 55 54

7-

- 56%.

41 49

()

42 . 41% , - 40

- 39 .

.70

58

74%

69%.

,18 2013

➤ 2013 - MYSUCCESS.BG 2013

: 20-21.06.2013

: ,

➤ _____

: 27.06.2013

: *Betahaus*,

➤ _____

: 13.07.2013- 14.07.2013

: , , . *I*