







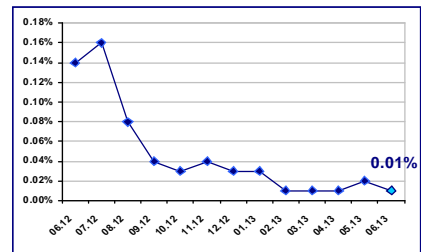
**12.06.2013**

EUR/BGN	1.95583
USD/BGN	1.47354
GBP/BGN	2.29047

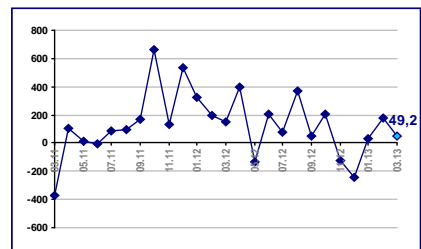
**USD/BGN**



**0.01% 01.06.2013**

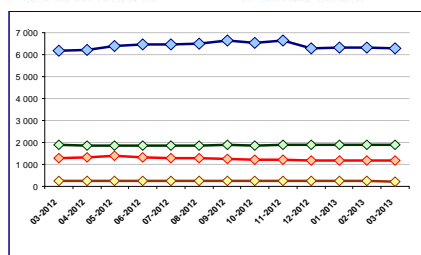


**49.2 . EUR 2013**

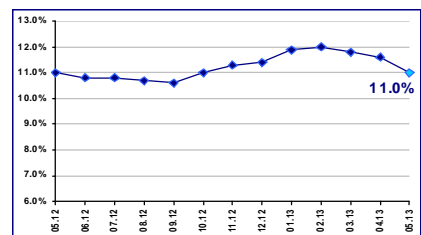


**2013**

◆ Към нефинансови предприятия    ◆ Към домакинства и НПООД  
◆ Жилищни кредити    ◆ Други кредити



**11.0 % 2013**



37,6%  
50 ( )

2013 . 2003 . 30 .

60% ,07 2013

**16,58** . .

2013 . 16,58 . . (8,48 . )  
2277 . ,

0,4% 2012 . 0,1 , 14,1

0,9 4,5

0,4 32% .

64 63,5% . 18,2 ' .

,06 2013

**12,7** .

2013 . 12,7 . ,

13,5 . ,

9,7 . . - 3,7 .

2013 . 0,7%

3,188 . . 1,3 . .

,06 2013

**10**

" , 2011 . "

No_2011			( . . )	
			2011	2010
1			44 893	n.d.
2			35 382	35 652
3			31 322	35 202
4			31 058	33 579
5			28 372	13 617
6			25 474	29 478
7	2000		18 764	19 185
8	-		17 289	17 556
9			16 236	16 413
10			15 193	12 185

(BEIS) [www.beis.bia-bg.com](http://www.beis.bia-bg.com)

" "

S&P,

BG40 0.56% 151.23 . SOFIX  
 BGTR30 0.41% 0.13%,  
 443.96 311.77 . -  
 BGREIT, 90.25 . 40.39  
 1.08% 38.7 . .  
 " " " -  
 " " 550 . .  
 0.36% 3.1 . " " 0.35%  
 135 . .  
 1.44 . .  
 , 2013-06-11

SOFIX 1.35%,  
 BG TR30,  
 442.14 311.37 . - BG40  
 (+8.18%), 152.08 . - " (+5.77%),  
 " " (+10%) " - " (+7.14%),  
 " " (+7.99%) - BG40  
 10.62%, SOFIX BG TR30 2.5 .  
 " " ,  
 BG40, . -  
 1.28% 3.07 . 1.1 . . ,  
 " " (1.41%).  
 , 2013-06-10

( )	
(03-07 2013)	
Premium	4 090 801.99
Standard	9 977 650.84
	1 838 027.66
	<b>27 636 611.85</b>

**BGREIT: 10.05.2013 – 11.06.2013**

**BG40: 10.05.2013 – 11.06.2013**

**SOFIX: 10.05.2013 – 11.06.2013**

" " "

" "

,

– 4.6 . . , , ,

, 18 . . , .

" " 2.94 . . ,

- , 1.38

6.15 . . 24 . 4.6 .

1.91 .

, 2013-06-07



7 . .

23-

7 . . :

,

,

,

,

23

" "

2010 ..

2013 ..

500 000

858 515 .

355 000 .

,12 2013

TheMoveChannel.com -

13-

2012 .

5 -

,

,

,

,

,

,

40

,

,

,

.

.

" "

-

" "

" "

10

2013

" - 2013" -

,

- " " -

" "

" "

17 721 421. 67 .

10

2013

**15**

15

" "

,10 2013

Investor.bg, 11 2013

40

40

International Hotel Casino & Tower Suites.

325

22

Suites" "

1500

,300

3

,11 2013

126

126,6

2014

15

2009

,11 2013

Unique Estates,

2008

20

30

10

8

2600

100 000

500

" &

9

18

180

,10 2013

4.95

80%

6.2



( )  
 1700 . " "

4 . 4700 . .

2 . , , 2008 .

, 10 2013

-

300 . " "

" " ECDC (European  
 Convergence Development Company). 389  
 619 " "

- " " " "

45 .

17 .

*Stroimedia.bg, 10 2013*

**Colliers 17- 100** (IAOP)

Colliers International - 17-  
 . Colliers

2006 . IAOP

Colliers , IAOP,

120 000 , 100-

75 25 -

:

, 03 2013



4%

" " " " , - ,  
2012 .  
( ). , -  
,

4% 2.822 . . 2011 . - - 10.8%, 12.1%.  
,

?

1 ,  
- 13 . 5.5 . - -

57.6%

1 , 1 - - ,

GSM

( 150%)

" " . 2012 . 3.9% 44.6%  
" " 2% 43.2% " " , 2012 .

36.1% . 2012 . 2011 .: 36.4% -

Telenor.

20.4% 3.9% 19.3%. - 1.8%

2012 .

. 10 12

18.7% , 1.9

68.6% 2012 . - "

" ,  
Long Term Evolution (LTE).

ADSL LAN . " " " " " .

2011 . 2012 .

11.01% 2012 .  
1.87 . 18.24%

30.2% 310.6 . 2012 .

, 12 2013

↓ \_\_\_\_\_ : \_\_\_\_\_ .  
\_\_\_\_\_ ?

: 13.06.2013, 13-18 .

: „ „ 15,

↓ \_\_\_\_\_  
\_\_\_\_\_

: 13.06.2013, 10:00 16:00 .

: „ „ „ „ „

↓ \_\_\_\_\_ **2013 - MYSUCCESS.BG** \_\_\_\_\_ **2013**

: 20-21.06.2013

: ,

↓ \_\_\_\_\_

: 27.06.2013

: *Betahaus*,

↓ \_\_\_\_\_

: 13.07.2013- 14.07.2013

: , , . *I*