





MDF ( ) , 1000  
 10%  
 90% 600 , 500  
 " — "  
 , 12 2012  
 " " " "  
 ;  
 " "  
 " " " " " " " " " "  
 2013 , " " 540  
 59 , — ,  
 63 .  
 - 15 „  
 25 „  
 , 8%  
 " "  
 " " " " "  
 " " " " " " " " " " "  
 " " " " " " " " " " "  
 " " " " " " " " " " " " "  
 , 8 2012

2.6% 0.3 6.6%

0.2% 2.7% 2011 .

(+0.6%). (+1.1%), (+0.9%) (-

0.6%), 2012 . - (+6.6%), (+6.3%)

(+6.0%), (+0.9%) (+0.5%), Ма ,

, 07 2012

**2,53%**

2,53% 7-

30 .

1,90

2,91%, - 4,45%.

(4,80%), (5,51%), (5,23%),

(2,24%) (3,13%) (2,07%).

30 ,

89%

(5%).

125 .

econ.bg, 13 2012

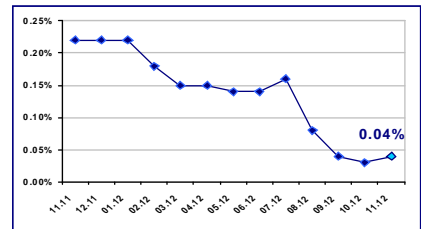
14.11.2012

EUR/BGN	1.95583
USD/BGN	1.54051
GBP/BGN	2.44586

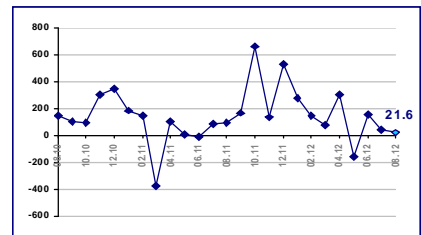
USD/BGN



0.04% 01.11.2012

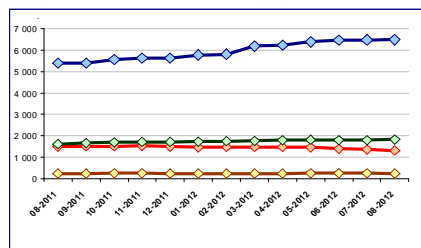


21.6 . EUR 2012

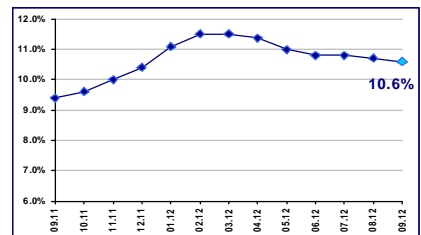


2012

Към нефинансови предприятия Към домакинства и НПООД  
Жилищни кредити Други кредити



10.6% 2012



2012 . ( FOB - CIF) . FOB/FOB ( -  
 2,83 . . )  
 , (37.1%) 2012 .  
 ”, - (36.1%) - ” ” ( )  
 , (50.6%) ( . )”. - ”,  
 ” (0.2%). ” - ’ 2012 .  
 2.1% 15.7 . .  
 , 71.1% - ’ ’ ’ 2012 .  
 11.3% 2.0 . .  
 , 0.6% , 2012 .  
 13.8 . .

econ.bg, 12 2012

**768** , **- 2,13** .

2012 . 2012 .  
 2012 . 0,5% 754 . 768 ,  
 , ” ,  
 - 7%. -  
 - 12,2%, - 7,2%.  
 2012 . 8,8%  
 2011 ., 2012 . 5%,  
 - 10,4%. 2012 . 1% 2,13 .  
 22 . 2012 . - 17,7%. -  
 1,2%. - 7,7%, -  
 ,09 2012

**1,8**

2012 . 1,8% 2012 .,  
 , 2012 . 2012 .,  
 2012 . 1,3% 2011 .  
 - 2,5%, - 4,7%, 0,6%. -  
 - 27,2%, ;  
 - 13,0%,  
 - 8,8%, , -

6.0%, - 5.7%, - 11.2%, - 6.3%.  
 4.1% - 10.0%, , 08 2012

**0,8%**

2013 . 1,4%, 2014 . - 2%, 0,8%  
 2013 . 2014 . 12,7%,  
 2013 . 2014 . 12,5%.  
 2,5%. 2013 2014 . 2,6% 2,7%.  
 19,5%  
 2013 . 2014 .  
 0,3% 0,4%  
 - 0,4% 0,1%  
 , 08 2012

**€450**

450 " " , 150  
 250-300  
 10%  
 450 , 34,708 , 17  
 , 07 2012

**10**

2011 .

No_ 2011			( . . )	
			2011	2010
1			2 486 951	2 572 223
2		( )	1 321 764	1 497 788
3			817 329	955 139
4			22 387	16 985
5			20 097	20 392
6			12 256	16 414
7	1		10 897	9 870
8			5 534	6 562
9			3 063	2 567
10			2 383	2 244

(BEIS) [www.beis.bia-bg.com](http://www.beis.bia-bg.com)



2012 .) ( )

6

2008

, 2012-11-14

17

30

6.5%

21.5%

28,95%

0%

0,52%

17,28%

16,76%

2012

VT Trade Opportunities llc

2012

6

2012

(05- 09

Premium	318 859.59
Standard	1 844 224.09
	13 021 340.09
	<b>23 862 276.81</b>

**BGREIT: 12.10.2012 – 13.11.2012**

**BG40: 12.10.2012 – 13.11.2012**

**SOFIX: 12.10.2012 – 13.11.2012**

Opportunities Ilc 2012 . 28,95% , 7,85% 36,8%. VT Trade 0% 7 7,85% 36,8%.  
 , 28,95%  
 , 7,85% 36,8%. Euroins Romania Asigurare-Reasigurare 3,43% 5,39% 7 2012 . ,  
 - 16,3% 21,14%.  
 . , 2012-11-13  
**42** .  
 „ 42 . „ .  
 „ .  
 12 . (24,22 . . ), - .  
 5,8 . (11,72 . . ).  
 , 2007 . , 5-  
 , - . 10% .  
 „ ”  
 , 2012-11-12

**VP Trade Opportunities SA, Panama**

**896 888** ,

28.95% . 07.11.2012 . VP  
 Trade Opportunities SA 28.95% 07.11.2012 . 28.95%  
 06.11.2012 .  
 Money.bg, 2012-11-12  
 - ” ” ” ”  
 , - , .  
 , 22.80 . .  
 98.78%. 100%, 98.17% 95% ,  
 29.31 . 24  
 , . . 6 , .  
 , ” ” .  
 , 20% .  
 , 51.5 55 . ,  
 76.3 81.5 . . ” .  
 , ” ” .  
 ” 67% ” ” , .  
 ” ” ,

, 2012-11-09



37  
 31.7  
 (EBITDA) 2011 ., 32.4%.  
 43.5 2012 . 50 . .,  
 - 7.7 , " "  
 , 2012-11-08  
 - 5.6%  
 " " ( ),  
 202 500 " " ,  
 " " ,  
 " " , 78%  
 50% - , - . .  
 10 ,  
 65 . . -  
 35 . .  
 D ily, 2012-11-08

Domtech Holding AG.  
 Domtech  
 " " " , K & K Electronics SRL  
 Domo Retail.  
 D ily, 2012-11-07



<p>„</p> <p>„</p> <p>„</p> <p>„</p>	
<p>- „</p> <p>87 000</p>	<p>, 14 2012</p> <p>4</p>
<p>31 2013</p>	
<p>1500 „</p> <p>, 14 2012</p>	
<p>45</p>	<p>4</p>
<p>40 200</p>	<p>, 11 2012</p>
<p>2013</p>	<p>720</p>
<p>150</p> <p>150</p>	<p>2020 (2014-2020)</p>
<p>500</p> <p>60%</p>	<p>22</p> <p>Stroimedia.bg, 8 2012</p>
<p>3,5</p>	<p>4,7</p>

300

50 – 60

250

49,2

JESSICA

„

1

Stroimedia.bg, 12 2012

JESSICA

Stroitel, 12 2012

Econ.bg, 12 2012

10

16

5

6

100,

473 760.00

3-

130 240.00 . 46 380 . ,  
 322 712 .  
*Ikam1.com, 11 2012*

596 , 11.3% - , ( ) ,  
 - , - , 596 ,  
 2 652, 18.4% - 2011 . 217.7 . . , 11.6%  
 82.1 . . ,  
 75.8 . . , 9 2012

**18** „ . . “  
**1 641 000** .  
 - „ . . “ , 1 641 000 . 2008  
 - , " "

6 000 000 .

2010 .  
 - , 9 2012

( ) ,

5,2 . , - -  
 , , " .  
 8-10 000

- ,  
 ,  
 24 , 9 2012

2013 . 39

60

*Stroimedia.bg*, 8 2012





·  
·  
( 5 15% ),  
, 11 2012





: 14-16.11.2012

: " ", , " " 34



:

: 15.11.2012

: ,



**BGOUG**

: 16-18.11.2012

:



: 29.11.2012

: Vivacom ArtHall, , . 4



- :

: 16.10.2012-13.01.2013

: , , . , . " " 15, . ,  
.2, 7