







7.8

12

660

662

30

12-

2011

1,2

33,8

1,9

300

400

17

40%

6%

5,04%

06

2012

410 000

2012-

409 700

- 12.3

2011

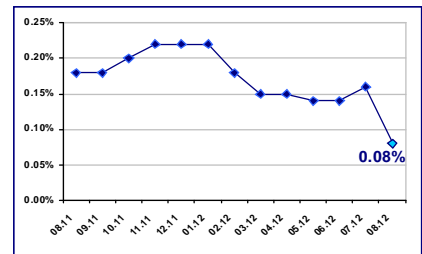
**08.08.2012**

EUR/BGN	1.95583
USD/BGN	1.57272
GBP/BGN	2.46512

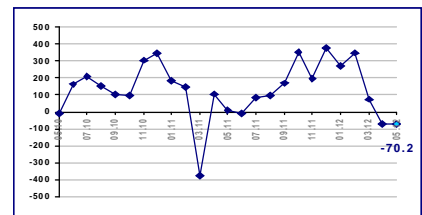
**USD/BGN**



**0.08% 01.08.2012**

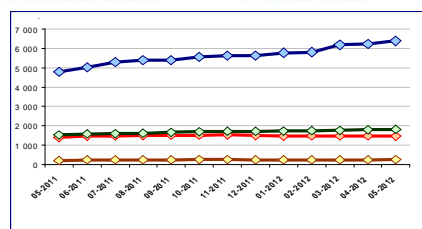


**-70.2 .EUR 2012**

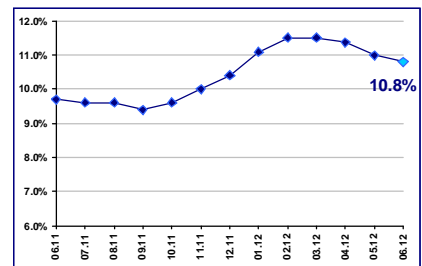


**2012**

Към нефинансови предприятия    Към домакинства и НПООД  
Жилищни кредити    Други кредити



**, 10.8% 2012**



15 - 64 1,1 3 283 100 66.6  
 2011 .  
 500 , 1,1 - . 2 913  
 - 46,2  
 15 - 64 2 875 100.  
 e 58,3 , e 0,2 -  
 2011 .  
 , 06 2012  
 62,4 .  
 649,7 . .,  
 31 5,1 . .  
 467,7 . . 405,3 . .  
 712,1 . . 2012 .  
 13 224,3 . . 46,0 % 2012 .  
 9,8 % (1 183,3 . .),  
 , 02 2012

## 10

", "

2011 . ,

No_ 2011			( . . )	
			2011	2010
1			668 382	607 195
2			184 624	160 877
3	-		129 998	90 992
4			119 423	116 054
5			106 672	82 042
6	4		87 436	94 836
7			77 820	77 820
8			74 343	71 212
9			57 687	2 363
10			32 863	37 097

(BEIS) [www.beis.bia-bg.com](http://www.beis.bia-bg.com)



" "

" "

30

1 2007

2.2

, 2012-08-08

" "

" "

695

63%

17

20

240

239 844"

353

( 100%

337

455.20

(30 - 3)

2012 .) ( )

Premium	491 963.35
Standard	6 349 061.10
	2 687 987.71
	<b>11 038 525.64</b>

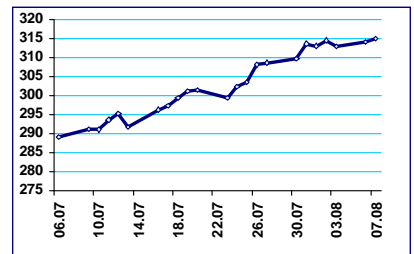
**BGREIT: 06.07.2012 – 07.08.2012**



**BG40: 06.07.2012 – 07.08.2012**



**SOFIX: 06.07.2012 – 07.08.2012**



, 2012-08-08

10%

2012

, 2012-08-08

09.12.2010 . .

100

48.3

4

, 2012-08-08

" " - " ",

3

2010 .,

2400

2600

, 2012-08-07

, - ( ),

, VTB Capital PLC ( ) “

” ( )

19 2012 .

2012 .

, 2012-08-07

98,17%

30  
8,09%

2012 . 1

2012 .,

34 387  
22,80 ./

95%

100%

2011 . 1,46

3,19

2012 .,

, 2012-08-06











2014 . 34 .  
14 .  
, 2 2012

1,5 . . . , 21,3%,  
Regent's Property Advisors

Investor.bg, 2 2012

" " " 2007-2013  
5 667 753,93 . -

stroimedia, 2 2012

6 . 5, 451 6  
48 300 . 60 238 .,  
17 . .  
" " 23 000 .

1064 . 41 . .  
1989 .  
, 2 2012

– II

Forton International 594.4 . . . , 600 . . . .

240 . . . . - 2013 . ,

39%.

" " " " Bulgaria Mall.

33 . . . .

Debenhams.

Bulgaria Mall.

Paradise Center,

80 . . . . - " "

25 . . . .

14 Cinema City.

Paradise Center Carrefour H&M.

The Strand

South Ring Mall, 30 . . . 72 . . . .

" 50% , "

Forton International ,

Bulgaria Mall. " , "

Paradise Center ,

Forton. - ,

Forton. , 27 - 100-150 . . ,

18 20 . . . .

Forton ,

8 2012

➤ \_\_\_\_\_ :

: 26.09.2012, 29.09.2012

: \*\*\*\*\*,

➤ EXPO REAL 2012

: 08-10.10.2012

: ,

➤ \_\_\_\_\_ :

\_\_\_\_\_ : 12.10.2012

: \*\*\*\*\*,