



" "

Moody's Investors Service / /

D+ D-

Moody's

Moody's

2011 .

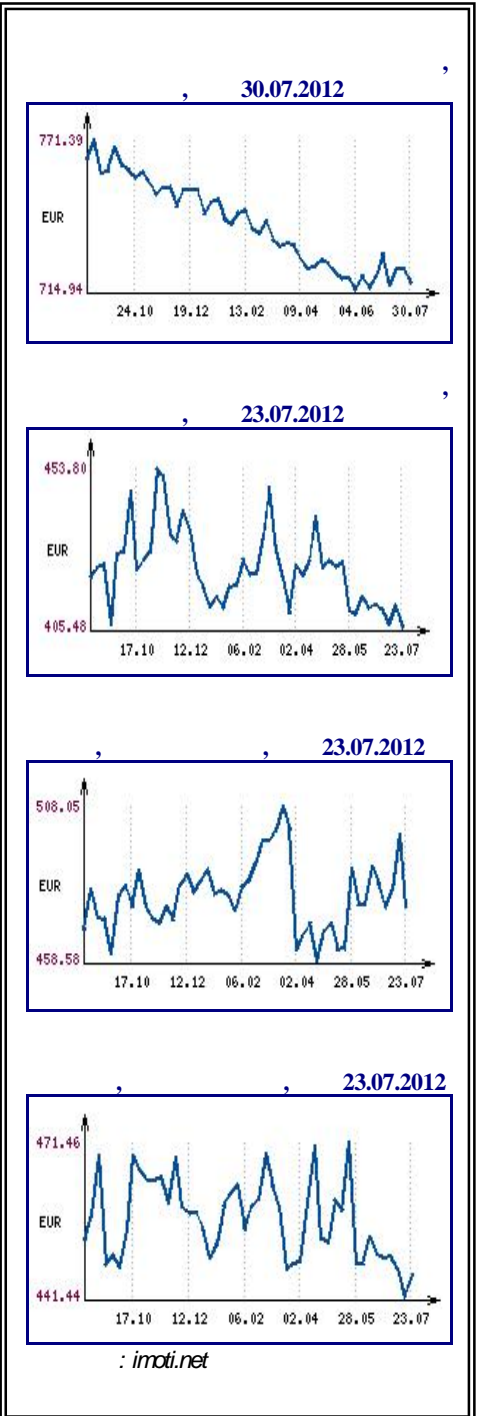
15%

Moody's

Raiffeisen Bank

International AG

, 1 2012



2

, 30 2012

" " " " " () " "

1 " " bogatite.com 95

2 " " , 30 2012

“ ” - “ ” 5

0,6%

14

20

, 27 2012

12.4%, 0.2

10.4%

26

8%

2009

2,2%

0,2%

2009

10%

10

1 4 39%

2012

0.8

0.7

1.2

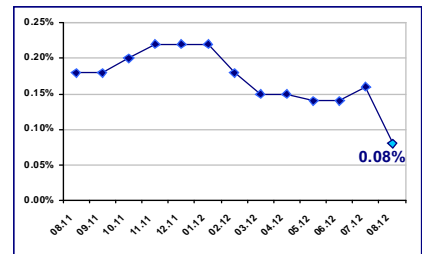
01.08.2012

| | |
|---------|---------|
| EUR/BGN | 1.95583 |
| USD/BGN | 1.59218 |
| GBP/BGN | 2.49484 |

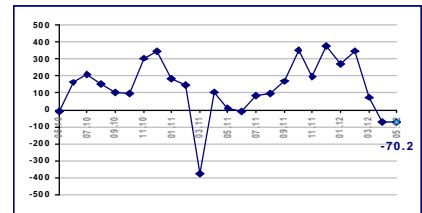
USD/BGN



0.08% 01.08.2012

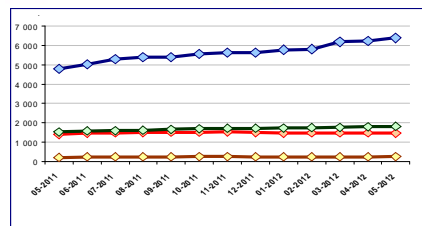


-70.2 .EUR 2012

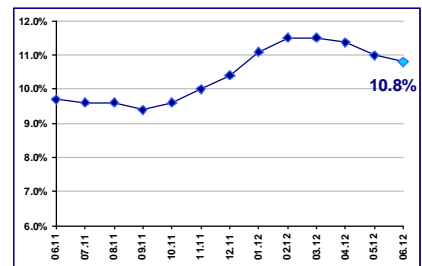


2012

◆ Към нефинансови предприятия ◆ Към домакинства и НТООД
◆ Жилищни кредити ◆ Други кредити



, 10.8% 2012



- 1.1 , - 3.2 , - 0.6
 2011 . 2012 . 3.3
 - 1.5 , - 2.0 .
 , 31 2012

1,1
 ,
 ,
 , 30 2012

1,7% 2013 ,
 () .
 0,8% ,
 2,5% .
 2,5% ,
 2013-2015 .,
 ,
 , 26 2012

23,65% , 23,55%
 ,
 ,
 18,758 , 1,1% - ,
 1,9% 7,433
 14,1% 2011 ., 32,432 ,
 , 20,07% ,
 20,50% , 25,93%

13/ 02 2012

6,462 . . .

9,909 . . . ,

, 25 2012

10

"

",

2011 .

| No_2011 | | | (. .) | |
|---------|---|--|---------|---------|
| | | | 2011 | 2010 |
| 1 | - | | 755 553 | 753 510 |
| 2 | | | 516 301 | 187 541 |
| 3 | | | 236 242 | 229 707 |
| 4 | | | 27 692 | 26 596 |
| 5 | | | 22 280 | 18 085 |
| 6 | | | 6 049 | 4 679 |
| 7 | | | 5 588 | 5 727 |
| 8 | | | 5 460 | 5 547 |
| 9 | | | 2 175 | 2 304 |
| 10 | | | 2 131 | 2 193 |

(BEIS) www.beis.bia-bg.com

2009 ..

2008-

2012 .

700

700

- 1,4

86

, 31 2012

(23 - 27 2012 .)

()

| | |
|----------|-------------------|
| Premium | 641 604 |
| Standard | 649 825 |
| | 8 747 596 |
| | 13 622 047 |

BGREIT: 29.06.2012 – 31.07.2012

| Date | Value |
|-------|-------|
| 29.06 | 70.5 |
| 03.07 | 70.5 |
| 07.07 | 69.5 |
| 11.07 | 68.5 |
| 15.07 | 69.0 |
| 19.07 | 73.5 |
| 23.07 | 74.5 |
| 27.07 | 74.5 |
| 31.07 | 75.5 |

BG40: 29.06.2012 – 31.07.2012

| Date | Value |
|-------|-------|
| 29.06 | 107.5 |
| 03.07 | 108.0 |
| 07.07 | 105.5 |
| 11.07 | 108.0 |
| 15.07 | 107.5 |
| 19.07 | 109.0 |
| 23.07 | 108.5 |
| 27.07 | 109.0 |
| 31.07 | 111.5 |

SOFIX: 29.06.2012 – 31.07.2012

| Date | Value |
|-------|-------|
| 29.06 | 295.0 |
| 03.07 | 298.0 |
| 07.07 | 290.0 |
| 11.07 | 292.0 |
| 15.07 | 295.0 |
| 19.07 | 300.0 |
| 23.07 | 300.0 |
| 27.07 | 305.0 |
| 31.07 | 315.0 |

”
, 27 2012

4

“ ”
“ ”
4-5
. 12
“ ” “ ”
, 27 2012 .

“ ”
12
, 26 2012 .

()
“ ”
“ ”
“ ”
2008 .
2.1 . . , - 1.5 . . ,
7%
“ ”
, 26 2012 .



50-

13
12

50

„open space”

plovdivweek.com, 31 2012

2

2012 .
32 . . . ,
1 570 242 . . .

6

90
2011 .
500 . . .

„China

30 2012

„ - ”

Ayfar Otomotiv Mars
Otomotiv.

27 2012

40 000

40 000

18

000,

27 2012

„China

Camc Engineering"

Money.bg, 27 2012

42 1.477 , 30 2012

347 000 , 29 2012

, 27 2012

2012 ., 13%. 12 20% 2008 25,26%. 40%

13/02 2012

, , - , , ,26 2012

1072 . 1015 .

54 000 . 50 000 .

2532 . , 48 000 ,, 40-50 . -

18 . .

12 . . ,

41 000 . 61 .

30 000 . ,

13 , 294 000 .. ,26 2012

" " 2012 .

0.3%.

100

2008 .

38%

Industry Watch,

[] [-]

Industry Watch

2009 .

40%

, 30 2012



:

: 26.09.2012, 29.09.2012

:

****,



EXPO REAL 2012

: 08-10.10.2012

:

,



:

: 12.10.2012

:

****,