

(),

, 27 2013

6,3

" " 6,3

30 2004 " 50

100% 6,3 " " "

, 27 2013

" "

5.5 " 80%

" " " " ()

24 92 26 " 11

110 " 13.8 Credit Suisse. - 5 2

, 26 2013

3

2000 3000 5500

" "

, 25 2013

() " "

(-). , ,

, ,

14 3000- 2

2010 . - ,

, 25 2013

" (), 250 " ,

21

Citibank Deutsche Bank,
(Citibank Raiffeisen).
J.P. Morgan, HSBC Societe Generale. Goldman Sachs,

30

, - ,

, 25 2013

HP 800

HP 800 4000

HP 2007 ., " -

215 . . 2011 . " "

250 , " 550 "

2011 . , ,

, 21 2013

10
 2013 . 31,4
 326,5
 10
 3
 2,9
 2,7
 2,4
 - 9,6
 - 7,2
 - 4,2
 3,9
 - 3,7
 1,4
 - 348
 2012 .
 2011 ., 1,7
 24 , 20 2013
 400
 2013 . 37,15
 91%
 434.6 (1.2%)
 2012 .
 ()
 37,59 94.8%
 2011 . 2
 2013 .
 26,85 (72.3%)
 65.8%), - 10,3
 (27.7% , 25.2%)
 2013 . 3065.2
 309.2 (9.2%).
 6316.1
 econ.bg, 26 2013
 40%
 40 25
 59 55
 30%

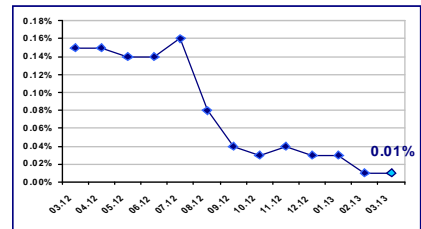
27.03.2013

EUR/BGN	1.95583
USD/BGN	1.52074
GBP/BGN	2.30369

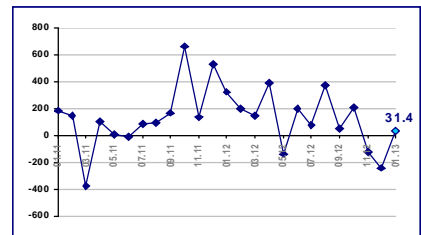
USD/BGN



0.01% 01.03.2013

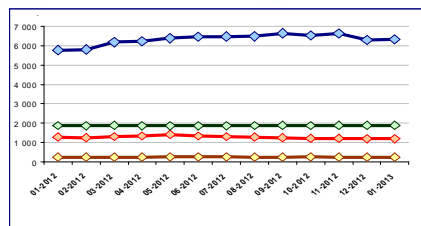


31.4 .EUR 2013

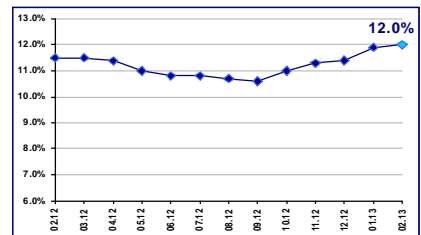


2013

Към нефинансови предприятия Към домакинства и НТООД
 Жилищни кредити Други кредити



12.0% 2013



212
 , 26 2013
 208
 25,5 489 35,124
 0,5% 42,573
 3,7% (1,519)
 9 7,2 20,8 8,887
 , 26 2013

4

18 4
 2 4.5 1.2
 20 400 850
 , 21 2013

10

2011

No_ 2011			(. .)	
			2011	2010
1			617 142	609 666
2			125 825	105 745
3			124 771	128 686
4			52 374	51 102
5			38 044	41 192
6			28 844	23 201
7			18 196	18 879
8	-		10 061	10 805
9			9 345	9 397
10			7 458	7 641

(BEIS) www.beis.bia-bg.com



()

99.99%.

" "

2013-03-26

10%

10%

9.9%

15.10

5%

(50.29%)

Bulgarian Acquisition Company II,
(32.99%).

	(18-22 2013)
Premium	2 178 689.85
Standard	55 083 318.15
	549 068.78
	64 422 345.05

BGREIT: 26.02.2013 – 26.03.2013

BG40: 26.02.2013 – 26.03.2013

SOFIX: 26.02.2013 – 26.03.2013

1%

90.70

2%.

540

16.11

SOFIX 376.61

+0.38%; BGTR30 281.95 -0.31%; BGREIT 84.83 +0.80%.

(3CZ) 1234 . -4.34%.

,
 ,
 ,
 , 2012 - 2013 .
 , 2013-03-21 , 100 . .
 2012 . 114 . ,
 54 . , 4
 , , 96 (8) , 110 (13) , 49 (15) 55 8
 1.30 75
 205 229 . 14.50%,
 / 130/245 .
 2012 . 1.77 . ,, 33 .
 , 49.99 40.46 .
 , ;
 profit.bg, 2013-03-21 ,

1000 International. Forton
 157 214
 96,1 250
 704
 12
 Forton. 2013
Mall 60%
 Sofia Ring Mall
 Sofia South Ring Mall
 Mr. Bricolage
 20
 2014 Sofia Ring Mall
 Fourlis
 € 300
 7 - 8
 IKEA
 2013

4
 4,061
 80%
 2013
 Roca
 ISH
 Fayans
 650
 2013
 2013
 2013

3,8 / .

3,8 / . , Colliers International.
2013 . 2012 .
17%.

, 25 2013
"

25 .

25 .

, 25 2013
" "

ZBS.

1 000

31 ,

15

Stroimedia.bg, 22 2013

200

(6 7) , (12) (14) .

" " " " .

, 22 2013

Accor

10% , 2012 . -
 Novotel
 . 1 2012 . ,
 Accor . 3500 , 92 .
 , " ,
 " " ,
 "20+10+10" , Novotel. , " " .
 ,
 AIG/Lincoln Asset&Property Management Company. 23 ' . . ,
 , 21 2013 22 . " " ,

CBM Group

. ,
 (1967 .), - , ,
 , - . CBM Group
 - .
 , 4 000 . 6 .
 , 21 2013
 “ ”
 “ ”
 , 2 000 .
 - ,
 1 200 000 . “ 2011 . 179 .
 ,
 ” ,
 “ ” ,
 , 21 2013

1300 , , " "

8000 . , , " "

90- , , " "

Sisecam, Solvay 1997 .
 , Solvay " " 97%

Solvay. " "

(" "), 2011 . Solvay Group " "

15 " " 1 . "

(300 . .) " 1.5

) " " (2013 - 2015
 25 60 . . " 45 . .

" , , " "

and Fertilizers " " 1999 . Acid
 Hardland Investment " "
 Union Miniere (Umicore).

" , , " "

100 . , , " "

11 13

2014 .
20 .

" " " " " " 2012 .

10%

12

90%

15

1997 . "

, 27 2013



: 10-12.04.2013

: . I,



: 26.01-15.04.2013

: , , ." " 1-2



: 30.05.2013

: , ,



ESPO 2013

: 30-31.05.2013

: . . ,