



VN

EVN,

" "

1997 ..

3-6

VN

, 20 2013

" "

OTE

700 (915).

Turk Telekom,

Turkcell,
Telenor, Deutsche Telekom,

40%

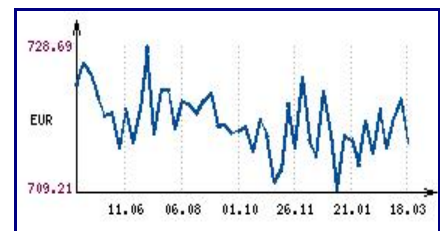
- " ",

1,65

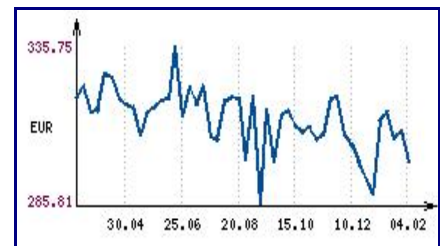
2014

Econ.bg, 20 2013

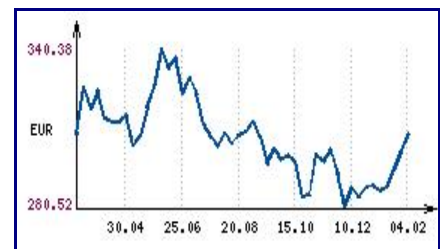
, 18.03.2013 ,



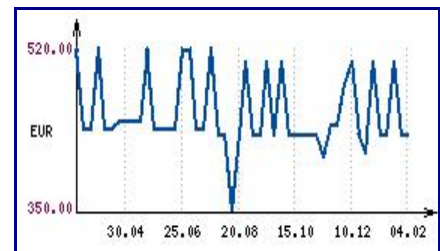
04.02.2013 ,



, 04.02.2013 ,



, 04.02.2013 ,



: imoti.net

()

OTP Bank,

207.5

MKB Bank

2012 .
100

OTP Bank

, 18),

, 19 2013

"

"

, 18 2013

()

()

, 18 2013

"

2 2010 .

"

"

"

, 14 2013

10

2013 . 31,4

326,5

10

3

2,9

2,7

2,4

- 9,6

- 7,2

- 4,2

3,9

- 3,7

1,4

- 348

2012 .

2011 .

1,7

24

, 20

2013

5.1

2012-

2.9%,

- 9.1%,

2.4%.

2012 . -

" - 26.3%,

" - 14.1%,

" - 13.8%.

, 20

2013

€60

59

2,8

2012 .

2012 .

800

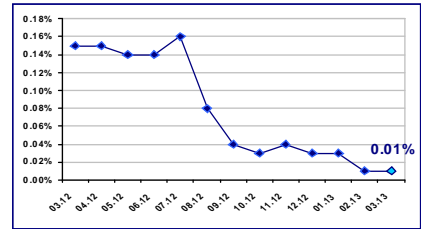
20.03.2013

EUR/BGN	1.95583
USD/BGN	1.51099
GBP/BGN	2.28525

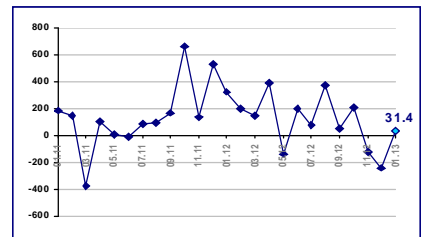
USD/BGN



0.01% 01.03.2013

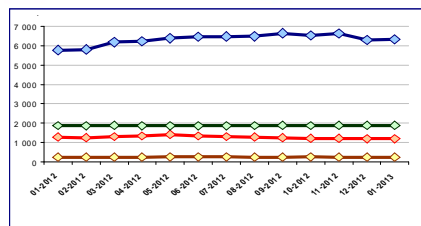


31.4 . EUR 2013

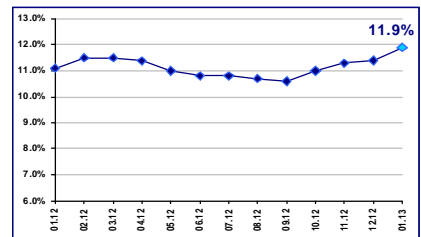


2013

◆ Към нефинансови предприятия ◆ Към домакинства и НПООД
◆ Жилищни кредити ◆ Други кредити



11.9% 2013



80
 56,6
 , 19 2013
7-
 () 8 2013 . 7-
 , , 16 2013 . 16 2020 .
 2,82%.
 2,54 , 2013 . - 4,90.
 60
 () , 59,18 . 20 . 20 3.50%
 () .
 econ.bg, 19 2013

12,3% 2012

1 12,3%
 ,
 13,5% 0,7 , 1,2
 376,2 . 10,8%, 2011 . 410,3 . 2012 .,
 15 - 54 409 .
 29- - 118,5 .
 2011 . 128,5 . , 226,6 . ,
 20,8%.
 55,2%
 ,
 , 18 2013

3.6%

() 3.6% 0.1%,
 - 0.5%.
 ,
 4.2%.
 " " - 1.9%
 ,
 , 14 2013

8
 2011 . , 9,8%. 2012 .
 6,3%,
 1,7% , - 1,3%.
 , -

12 (45)/ 21 2013

, 14 2013

35%

34.8%

2012 . 1.5 . ,
 - 78,2
 - 21,2 1,7 . -
 . 80%
 2012 . 286,5
 199,6 . . 2013 .

, 13 2013

10

"
 2011 .

No_ 2011			(. .)	
			2011	2010
1			50 699	160 325
2			21 798	18 904
3			9 023	10 210
4			8 586	6 040
5			6 332	5 305
6	-		5 612	5 802
7			3 924	4 694
8			3 437	3 889
9			2 753	2 727
10			2 515	2 693

(BEIS) www.beis.bia-bg.com

74%
 BG40
 74%
 BG40.
 4,34%, BG40
 3,36%.
 , 2013-03-20
 27.2
 8.2%
 22%,
 1.4%
 38%
 , 2013-03-18
 ()
 50.0542%
 Patria Corporate Finance,
 KBC Group,
 Deutsche Boerse, NASDAQ,
 Hellenic Exchanges
 2012

()	
(11-15 2013)	
Premium	1 343 699.57
Standard	1 924 920.07
	259 054.11
	14 095 862.38

BGREIT: 19.02.2013 – 19.03.2013

BG40: 19.02.2013 – 19.03.2013

SOFIX: 19.02.2013 – 19.03.2013

Energo pro.
, 2013-03-15

„ ” 10.01% „ ”

10.01%

50

- , 2013-03-14

”

5

40

40

3

3

Venture Forum

21

22

Balkan

Balkan Unlimited Bulgaria -
Balkan Unlimited.

(BEIC).

, 20 2013

10,3%

2012-

15

34-

15,7%

2011-

134

10%

, 15

2013

, 19 2013

4,6

15%

2012 .,

2

2

Colliers International.

citybuild.bg, 14

2013

665.6 . . . ,

2013 . . . Colliers

17%,

8500 . . .
Sofia Airport Center

Colliers

, 19 2013

1 200 000

21 646 . . .

1 200 000

Stroimedia.bg, 18 2013

5.4% **2012** .

Property Guide. 24

41

Global

2012 .

1.4%,

5.4%,

Global Property Guide.

2011 .,

8.7%.

3.6%

20.4, 19.9 10.6

14.2, 12.7

9.5

, 18 2013

China Volant Industr

. China Volant Industry Co

CASIC, 580 , 120
China Volant Industry Co : HDPE
, 18 2013
” ”
” ”
” - ”
” ” 30
” ”
” ”
- XVIII
- , 15 2013



2012 .

20% 13%.

90-

7-8

15

1997 .

1998 .

2003 .

700 .

2013",

– " ",
,
,
" " " ,

6-7

25%

(),

2012 . " 1 .
4% 2011 . – 40%,
70%
26% 2011 . 230 . 5% 2012 .
2011 . 20 .
2009 .

" "
,
" " .

100%

2012 . " " 48 .
20 . 5% 2011 .
2013 . 7% 5 1

, 20 2013

↘ SEO 2013

: 22.03.2013

: , , . 147



: 25-27.03.2013

: , , . 147



: 10-12.04.2013

: . I,



: 26.01-15.04.2013

: , , . " 1-2